

Directors (As of April 1, 2018)

MATSUMURA Keiji: President (and Executive Director of the Nara National Research Institute for Cultural Properties)

SUGINO Tsuyoshi: Director

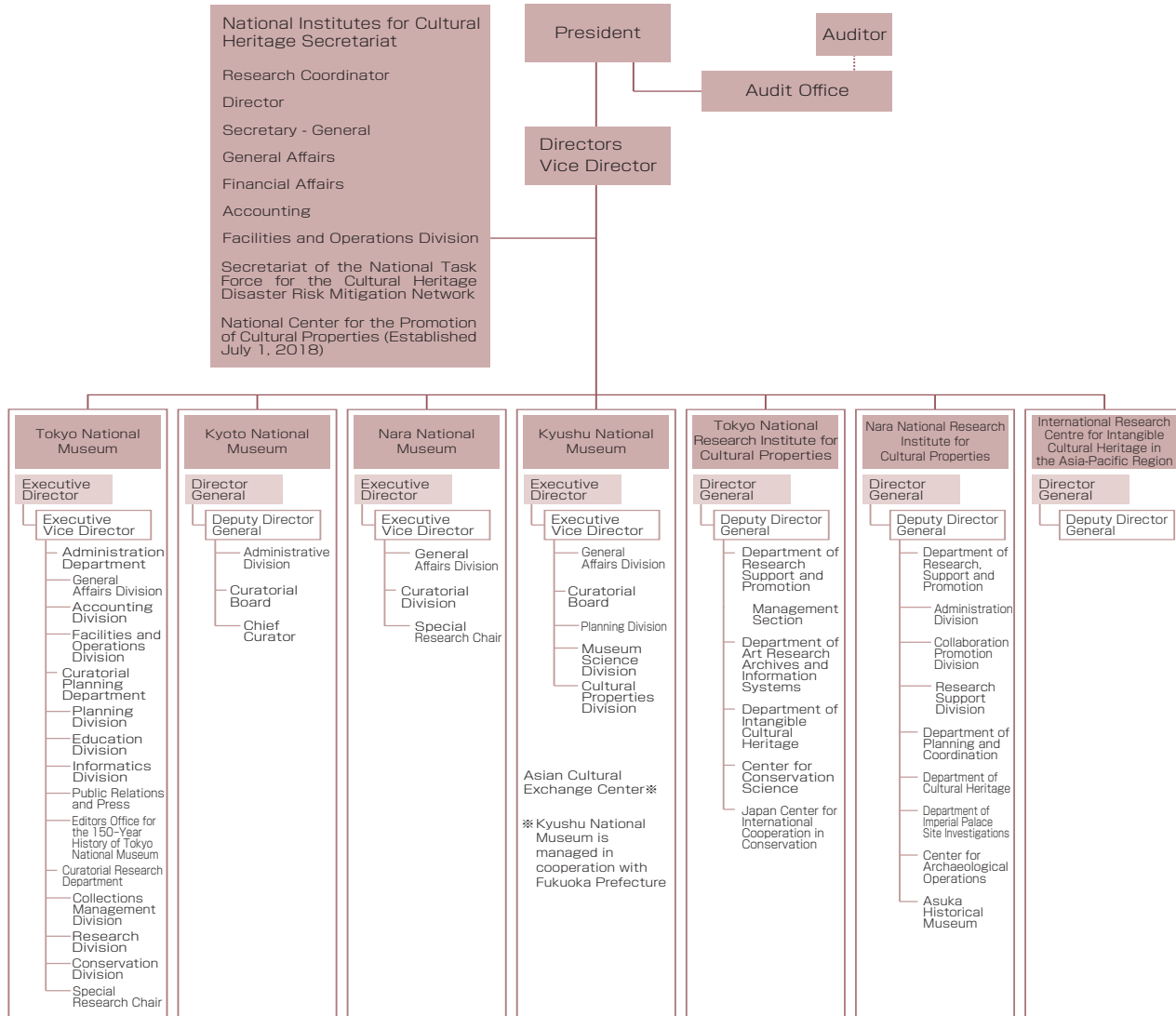
SHIMATANI Hiroyuki: Director (and Executive Director, Kyusyu National Museum)

HAYASHIDA Suma: Director

KURUSHIMA Noriko: Auditor

NAKAMOTO Fuminori: Auditor

Organizational Chart



Number of Staff

Division	Total staff	Administrative staff	Technical and security staff	Specialists	Curators/ Researchers
Total	349	133	20	4	192
National Institutes for Cultural Heritage Secretariat	24	23	0	0	1
Tokyo National Museum	106	35	13	3	55
Kyoto National Museum	39	19	4	0	16
Nara National Museum	31	15	3	0	13
Kyushu National Museum	25	8	0	0	17
Tokyo National Research Institute for Cultural Properties	42	8	0	0	34
Nara National Research Institute for Cultural Properties	79	23	0	1	55
International Research Centre for Intangible Cultural Heritage in the Asia-Pacific Region	3	2	0	0	1

(As of April 1, 2018)