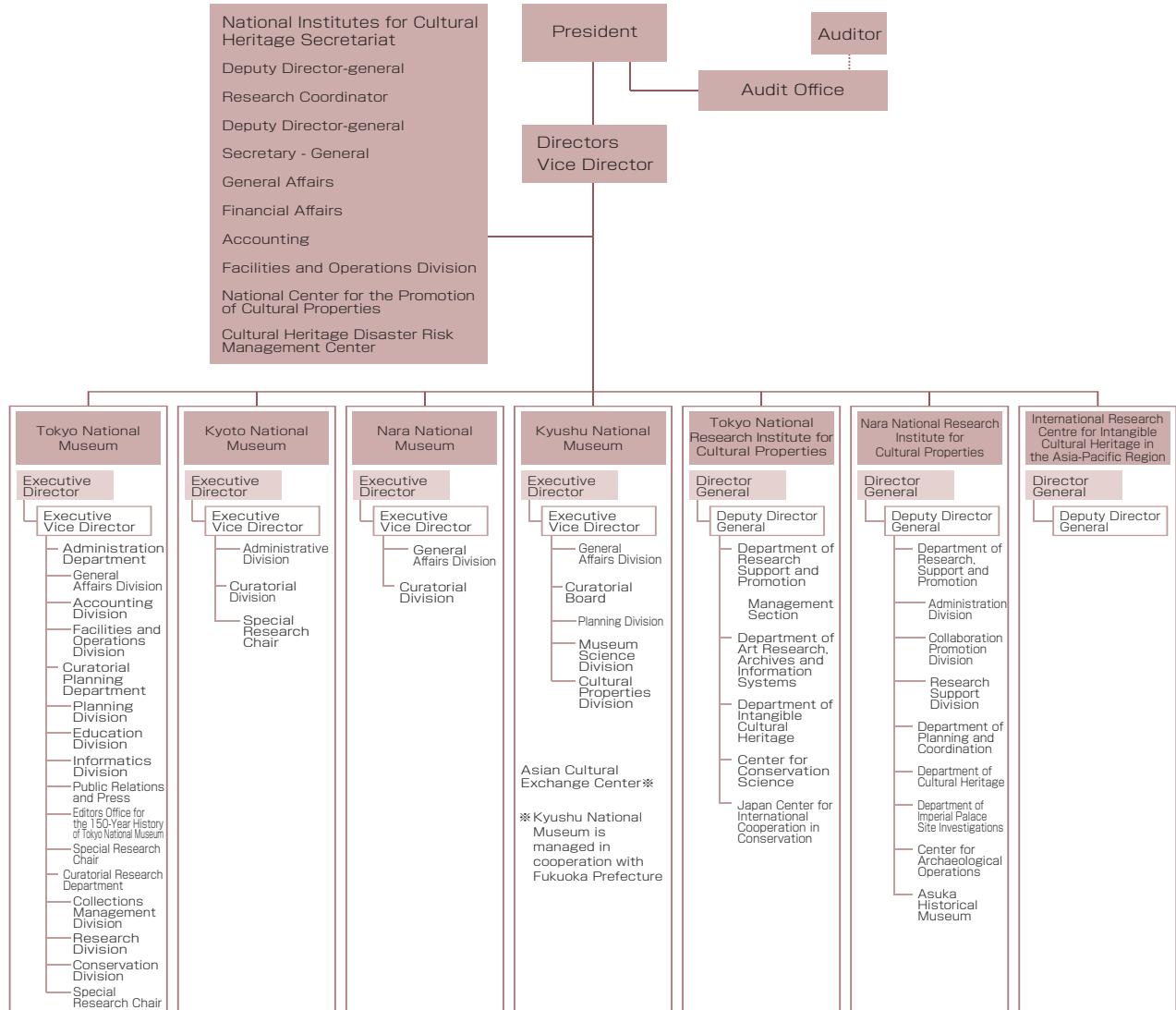


## Directors (As of April 1, 2021)

SHIMATANI Hiroyuki: President (Executive Director, Kyushu National Museum)  
 NAGAYAMA Yuji: Director  
 HAYASHIDA Suma: Director

KURUSHIMA Noriko: Auditor  
 NAKAMOTO Fuminori: Auditor

## Organizational Chart



## Number of Staff

Division	Total staff	Administrative staff	Technical and security staff	Specialists	Curators/ Researchers
Total	401	150	20	17	214
National Institutes for Cultural Heritage Secretariat	24	24	0	0	0
National Center for the Promotion of Cultural Properties	26	7	0	5	14
Cultural Heritage Disaster Risk Management Center	9	1	0	0	8
Tokyo National Museum	109	37	12	9	51
Kyoto National Museum	43	20	5	1	17
Nara National Museum	34	15	3	1	15
Kyushu National Museum	27	10	0	0	17
Tokyo National Research Institute for Cultural Properties	42	8	0	0	34
Nara National Research Institute for Cultural Properties	83	25	0	1	57
International Research Centre for Intangible Cultural Heritage in the Asia-Pacific Region	4	3	0	0	1

(As of April 1, 2021)