



2021

Outline of the National Institutes for Cultural Heritage



CONTENTS



In FY2017, which marked the 10th anniversary of its establishment, the NICH adopted a new logo. Logo concept: "Linkage"
The logo design combines knotted cords with a shape resembling the DNA double helix. The "knotted cords" represent linkage between people and cultures (i.e. cultural heritage), while the "DNA" represents linkage between past, present and future (i.e. cultural transmission). The logo represents the core mission of the NICH, which is to foster an in-depth understanding of "cultural DNA" and transmit awareness of the importance of cultural heritage to people all over the world.

Cover Photos



TOKYO NATIONAL MUSEUM
Honkan(Japanese Gallery)



KYOTO NATIONAL MUSEUM
Meiji Kotokan



NARA NATIONAL MUSEUM
Original Museum Building



KYUSHU NATIONAL MUSEUM



TOKYO NATIONAL RESEARCH
INSTITUTE FOR CULTURAL
PROPERTIES



NARA NATIONAL RESEARCH
INSTITUTE FOR CULTURAL
PROPERTIES
Main Building



INTERNATIONAL RESEARCH
CENTRE FOR INTANGIBLE
CULTURAL HERITAGE IN THE
ASIA-PACIFIC REGION (IRCI)

Message	1
I Organization	2
Directors	
Organizational Chart	
Number of Staff	
II Outline of the National Institutes for Cultural Heritage	3
III Projects of the National Institutes for Cultural Heritage	7
1 Preservation and Transmission of Tangible Cultural Properties, and Utilization of Cultural Properties to Disseminate Japan's History and Traditional Culture Nationally and Internationally	7
(1) Collection and Preservation of Tangible Cultural Properties, and Transmission of Tangible Cultural Properties to Future Generations	
■ Acquisition	
■ Conservation and Restoration	
(2) Exhibitions	
■ Exhibitions	
■ Number of Visitors	
(3) Education	
(4) Research on the Collection, Preservation, and Exhibition of Tangible Cultural Properties (namely fine and applied arts), and Educational Activities	
(5) Contribution to Museum-related Activities in Japan and Abroad	
(6) New Initiatives Concerning the Transmission of Cultural Heritage Through the Promotion of Cultural Properties	
2 Implementing Research and Collaborative Projects for the Protection of Cultural Properties and Overseas Cultural Heritage	9
(1) Research Leading to New Ideas	
(2) Basic Research for the Improvement of Research and Development Utilizing Science and Technology	
(3) International Collaboration for the Preservation of Cultural Heritage	
(4) Collecting and Collating Information Relating to Cultural Properties, and Publicizing and Utilizing the Results of Surveys and Research	
(5) Provision of Training for, and Collaboration with, Local Government Authorities in Relation to Cultural Properties	
(6) Cultural Heritage Disaster Risk Management Initiatives	
3 New Projects	11
(1) Japan Cultural Expo	
IV Activities of Each Institution	12
Tokyo National Museum	12
Kyoto National Museum	14
Nara National Museum	16
Kyushu National Museum	18
Tokyo National Research Institute for Cultural Properties	20
Nara National Research Institute for Cultural Properties	22
International Research Centre for Intangible Cultural Heritage in the Asia-Pacific Region (IRCI)	24
V Reference Materials	26
External Evaluation Board	
Number of Staff	
Budget	
Income from External Sources	
VI Information about Donations and Membership	28
Financial Donations and Cultural Property Donations	
Membership	
Venue Rental	
Diversifying Visitor Experiences	

Message

SHIMATANI Hiroyuki

President

Independent Administrative Institution
National Institutes for Cultural Heritage
(Executive Director, Kyushu National Museum)



My name is Hiroyuki Shimatani and I have been appointed to succeed Matsumura Keiji as President of the Independent Administrative Institution National Institutes for Cultural Heritage (NICH). The role of president bears a heavy responsibility. I will do my utmost to live up to this role and fulfil the mission of leading the NICH.

The NICH comprises seven institutions, each with their own unique characteristics. These include four museums (Tokyo National Museum, Kyoto National Museum, Nara National Museum and Kyushu National Museum), two research institutes (Tokyo National Research Institute for Cultural Properties and Nara National Research Institute for Cultural Properties), and the International Research Centre for Intangible Cultural Heritage in the Asia-Pacific Region.

This fiscal year marks the start of our fifth medium-term development plan. Our national museums will continue to utilize their accumulated experience and knowledge to collect and conserve cultural artifacts in a systemically and historically balanced manner while utilizing the results of research to develop captivating exhibitions and educational programs. Our two research institutes and the International Research Centre for Intangible Cultural Heritage in the Asia-Pacific Region will continue to conduct basic and systemic research aimed at uncovering new knowledge about our cultural heritage. In October last year, we also established the Cultural Heritage Disaster Risk Management Center and we will continue to pursue various initiatives across Japan aimed at protecting our cultural heritage.

During the term of this development plan, we will strive to conserve our fragile cultural properties in an appropriate manner while utilizing the latest technology and adopting a diverse range of methods to provide an environment where people can encounter and enjoy learning about Japan's history, traditions and culture. We will also use the opportunity provided by the Tokyo Olympics and Paralympics to contribute to cultural tourism in Japan by actively utilizing our cultural resources and conveying the appeal of this cultural heritage in a manner easy to comprehend for both Japanese and non-Japanese people alike. The rampant spread of COVID-19 across the world has led to changes in our value systems. Our museums in particular will need to find ways to adapt to these 'new lifestyles.'

Our institutions face difficult circumstances and numerous challenges. With finances tight, we need to increase our own sources of income while tackling the issue of ageing facilities/equipment and striving to retain and develop staff, for example. We are tasked with preserving our cultural heritage while presenting opportunities for many people to appreciate and learn about this heritage. It is our responsibility to convey the deep connection between these activities and the vitality of modern Japanese culture.

From here on, we will continue pushing forward step by step while retaining a thoroughgoing awareness of the roles we need to fulfil. We look forward to receiving your continued support in these endeavors.

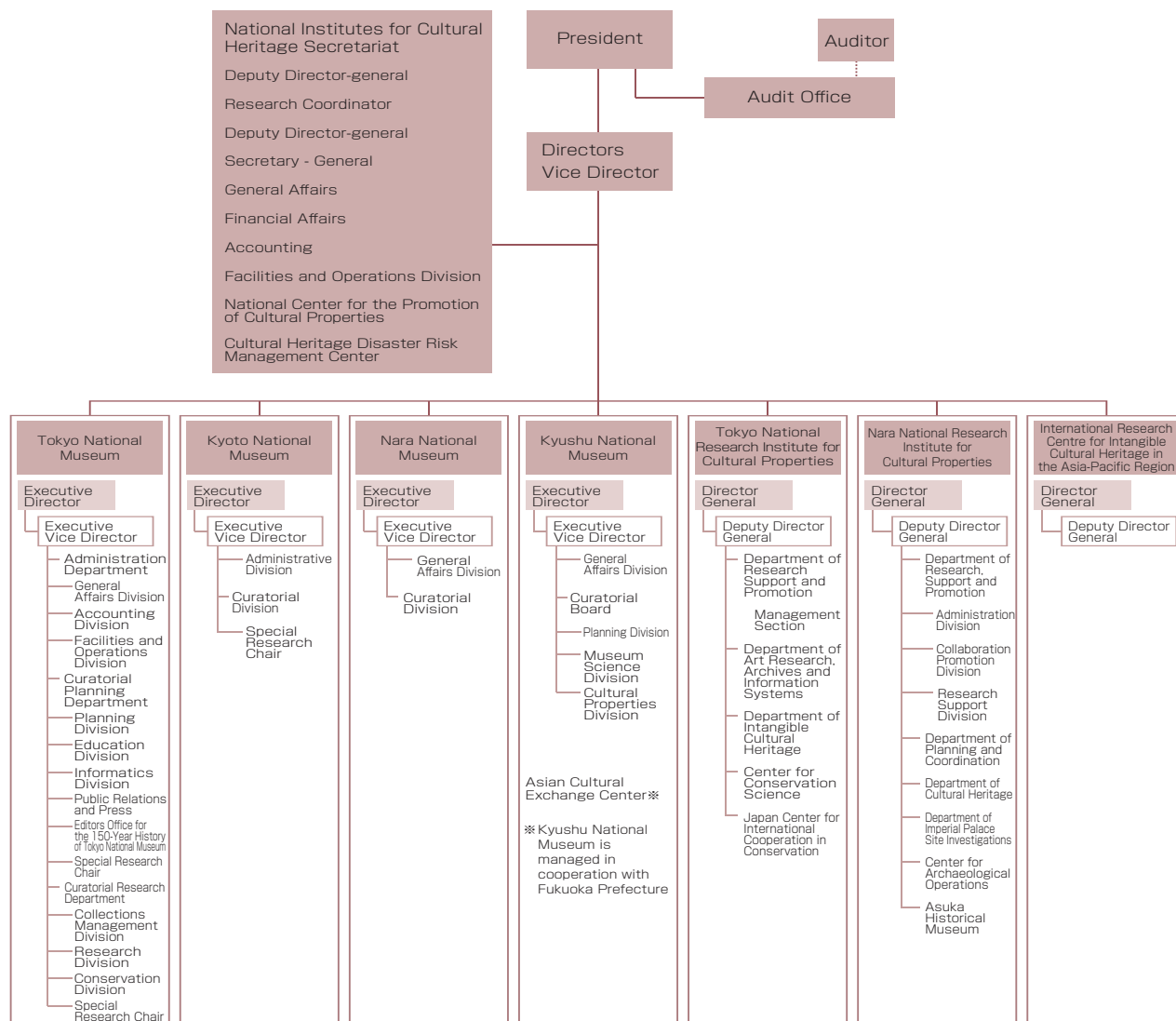
I Organization

Directors (As of April 1, 2021)

SHIMATANI Hiroyuki: President (Executive Director, Kyushu National Museum)
NAGAYAMA Yuji: Director
HAYASHIDA Suma: Director

KURUSHIMA Noriko: Auditor
NAKAMOTO Fuminori: Auditor

Organizational Chart



Number of Staff

Division	Total staff	Administrative staff	Technical and security staff	Specialists	Curators/ Researchers
Total	401	150	20	17	214
National Institutes for Cultural Heritage Secretariat	24	24	0	0	0
National Center for the Promotion of Cultural Properties	26	7	0	5	14
Cultural Heritage Disaster Risk Management Center	9	1	0	0	8
Tokyo National Museum	109	37	12	9	51
Kyoto National Museum	43	20	5	1	17
Nara National Museum	34	15	3	1	15
Kyushu National Museum	27	10	0	0	17
Tokyo National Research Institute for Cultural Properties	42	8	0	0	34
Nara National Research Institute for Cultural Properties	83	25	0	1	57
International Research Centre for Intangible Cultural Heritage in the Asia-Pacific Region	4	3	0	0	1

(As of April 1, 2021)

Outline of the National Institutes for Cultural Heritage

The Independent Administrative Institution (IAI), National Institutes for Cultural Heritage, was formed in April 2007 through the merging of the IAI National Museums (Tokyo National Museum, Kyoto National Museum, Nara National Museum, and Kyushu National Museum) and the IAI National Research Institutes for Cultural Properties (Tokyo National Research Institute for Cultural Properties and Nara National Research Institute for Cultural Properties), all of which share the same mission: the conservation and utilization of cultural properties. With the addition of the International Research Centre for Intangible Cultural Heritage in the Asia-Pacific Region, which was established in October 2011, the National Institutes for Cultural Heritage now comprise a total of seven separate institutions.

Japan's cultural properties are the precious assets of the Japanese people. In order to preserve and utilize these properties more effectively and efficiently under unified management, each of the seven existing institutions plays the following roles:

Tokyo National Museum

As Japan's foremost museum in the humanities field, Tokyo National Museum collects, preserves, manages, and displays cultural properties from across Japan and other Asian regions, while also conducting research and providing educational programs.

Kyoto National Museum

The Kyoto National Museum collects, preserves, manages, and exhibits cultural properties, while also conducting research and providing educational programs. The focus is on works from the Heian period to the Edo period, a time when Kyoto was the capital of Japan.

Nara National Museum

Nara National Museum collects, preserves, manages, and displays cultural properties, while also conducting research and providing educational programming. The focus is Buddhist art and the cultural properties of Nara.

Kyushu National Museum

Kyushu National Museum collects, preserves, manages, and displays cultural properties, while also conducting research and providing educational programs. The focus is on cultural assets related to Japan's cultural exchanges with other Asian regions.

Tokyo National Research Institute for Cultural Properties

Tokyo National Research Institute for Cultural Properties conducts research on Japanese cultural properties, utilizing a variety of methods. In addition to publicizing and utilizing the results of this research, as a national center for international cooperation, the institute also facilitates global research into the protection of cultural heritage.

Nara National Institute for Cultural Properties

In order to preserve and utilize cultural properties, the Institute conducts coordinated and comprehensive surveys across a variety of fields (including archeology, history, architecture, gardens, and conservation) at various sites, including the Nara Palace and Asuka/Fujiwara sites, the great temples of Nara, and other ancient shrines and temples. At the same time, the Institute cooperates and advises on the conservation and utilization of both domestic and overseas cultural properties.

International Research Centre for Intangible Cultural Heritage in the Asia-Pacific Region

This institution promotes research that contributes to safeguarding intangible cultural heritage (ICH) in the Asia-Pacific region, and also collects and disseminates information relating to international trends in the safeguarding of ICH.



TOKYO NATIONAL MUSEUM



13-9 Ueno Park,
Taito-ku, Tokyo, 110-8712
Phone: +81-3-3822-1111
<https://www.tnm.jp/>

Visitor Information

Hours: 9:30-17:00

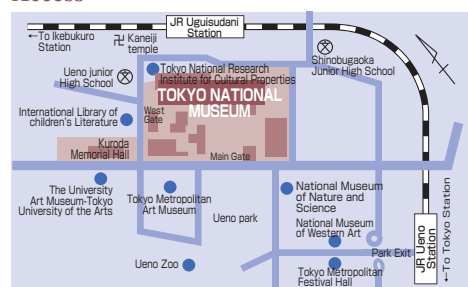
※Open until 21:00 on Fridays, Saturdays

※Last entry is 30 minutes before closing

Closed: Mondays (if Monday is a national holiday, the Museum will be open on Monday and closed on Tuesday). The Museum will also be closed on December 14, during the year-end and New Year holiday (December 26-January 1), and on January 4. However, the Museum will be open on August 10, January 3 and March 28

※Please note that opening days and hours are subject to change

Access



● Train

10 minute walk from the Park Exit of JR Ueno Station or from the South Exit of JR Uguisudani Station. 15 minute walk from Ueno Station or Nezu Station (Tokyo Metro), or from Keisei Ueno Station (Keisei Electric Railway Keisei Line).

Admission: Adults: 1,000 yen

University students: 500 yen

※An additional charge is required for special exhibitions

※Any person with disabilities and one accompanying caregiver are admitted free

※Persons over 70 or under 18 are admitted free to regular exhibitions

※Admission to regular exhibitions is free on International Museum Day (May 18 or the following day if May 18 falls on a Monday), Respect for the Aged Day (the third Monday of September), and Culture Day (November 3).



KYOTO NATIONAL MUSEUM



527 Chaya-cho, Higashiyama-ku, Kyoto
605-0931 Japan
Phone: +81-75-541-1151
(Main switchboard)
<https://www.kyohaku.go.jp/>

Visitor Information

Hours: 9:30-17:00

※Museum hours may change during Special Exhibition periods, etc.

※Last entry is 30 minutes before closing

Closed: Mondays (if Monday is a national holiday, the Museum will be open on Monday and closed on Tuesday) and during the year-end and New Year holiday (December 27-January 1)

※The Collection Galleries may be closed during Special Exhibitions or while Special Exhibitions are being installed or deinstalled.

※Additionally, the Museum may be closed temporarily.

Admission: Adults: 700 yen

University students: 350 yen

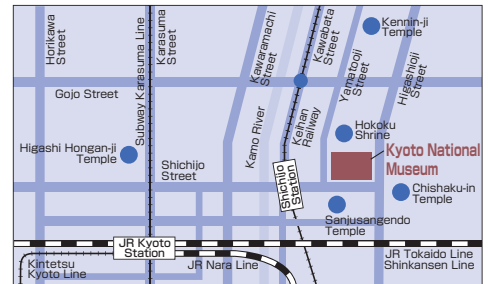
※A separate admission charge applies during periods when only Special Exhibitions, the Collection Galleries, and the Museum Gardens are open to visitors.

※Any person with disabilities and one accompanying caregiver are admitted free

※Persons over 70 or under 18 are admitted free to the Collection Galleries

※Please note that opening days and hours are subject to change

Access



Transportation:

●Bus

At Kyoto Station, take City Bus from bus platform D1 or D2. Get off at the Hakubutsukan Sanjusangendo-mae bus stop in front of the Museum.

●Train

Kintetsu Railway: Get off at Tanabashi Station and transfer to the Keihan Railway. From Keihan Tanabashi Station take a Demachi-yanagi-bound train to Shichijo Station. Walk eastward along Shichijo (Nanajo) Street for about 7 minutes to the Museum.

Keihan Railway: Get off at Shichijo Station. Walk eastward along Shichijo (Nanajo) Street for about 7 minutes to the Museum.

Hankyu Railway: Get off at Kyoto Kawaramachi Station. Walk eastward over the bridge to the Keihan Railway Gion Shijo Station. Take an Osaka-bound Keihan train to Shichijo Station. Walk eastward along Shichijo (Nanajo) Street for about 7 minutes to the Museum.

Parking: The museum has limited parking at an hourly rate. Please use public transportation whenever possible.



NARA NATIONAL MUSEUM



50 Noborioji-cho, Nara City
Nara Prefecture 630-8213
Phone: +81-742-22-7771
(Main switchboard)
<https://www.narahaku.go.jp/>

Visitor Information

Hours: 9:30-17:00

※On Fridays and Saturdays (excluding the year-end and New Year holiday period), Permanent Collection exhibitions and feature exhibitions are open until 20:00

※Opening hours are occasionally extended during special seasonal events in the Nara area

※Opening hours for special exhibitions and joint exhibitions vary by exhibition

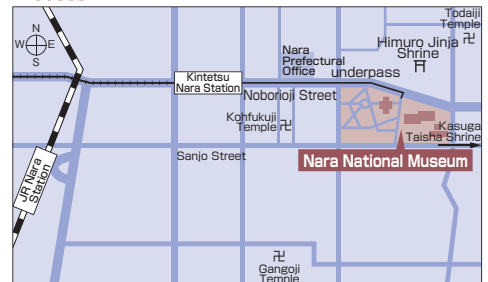
※Last entry is 30 minutes before closing

Closed: Mondays (if Monday is a national holiday, the museum will be open on Monday and closed on Tuesday) and during the year-end and New Year holiday (December 28-January 1)

※The Museum may also be closed on other days due to special circumstances

※Please note that opening days and hours are subject to change

Access



●Train

Kintetsu Line: 15 minutes from Kintetsu Nara Station.

●Bus

Take the Nara City Loop Line from JR or Kintetsu Nara Station to the Himuro Jinja/Kokuritsu Hakubutsukan bus stop.

Admission: Adults: 700 yen

University students: 350 yen

※An additional charge is required for special exhibitions

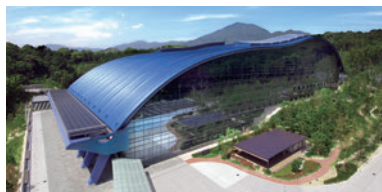
※Any person with disabilities and one accompanying caregiver are admitted free

※Persons over 70 or under 18 are admitted free to the Permanent Collection exhibitions

※Free admission to the Permanent Collection exhibitions on International Museum Day (May 18, or the following day if May 18 falls on a Monday), Kansai Culture Day, the day of the Owatari-Shiki procession in the On-Matsuri Festival, and on Setsubun (February 3)



KYUSHU NATIONAL MUSEUM



4-7-2, Ishizaka, Dazaifu City, Fukuoka
Prefecture, 818-0118
Phone: +81-92-918-2807
(Main switchboard)
www.kyuhaku.jp

Visitor Information

Hours: 9:30-17:00

※Open until 20:00 on Fridays and Saturdays

※Last entry is 30 minutes before closing

Closed: Mondays (if Monday is a national holiday, the Museum will be open on Monday and closed on Tuesday) and during the year-end holiday (December 24-31)

Admission: Adults: 700 yen

University students: 350 yen

※() indicates prices for paying visitors in groups of 20 or more

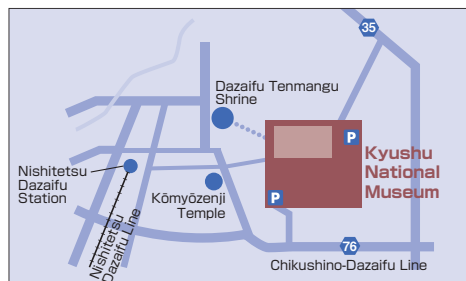
※An additional charge is required for special exhibitions

※Persons over 70 or under 18 are admitted free to the Cultural Exchange Exhibition (permanent exhibition)

※Free admission to the Cultural Exchange Exhibition on Children's Day (May 5), International Museum Day (May 18, or the following day if May 18 falls on a Monday), and Respect for the Aged Day (the third Monday of September)

※Please note that opening days and hours are subject to change

Access



●Train

Nishitetsu Rail Line: From Nishitetsu Fukuoka (Tenjin) Station, take the Nishitetsu Tenjin Omuta Line to Nishitetsu Futsukaichi Station (about 16 minutes on the Limited Express, 18 minutes on an Express train), and transfer to the Nishitetsu Dazaifu Line (about 5 minutes), and get off at Nishitetsu Dazaifu Station. About a 10 minute walk from Nishitetsu Dazaifu Station.

*No extra charge is required for taking the Limited Express or an Express train.

JR Line: From JR Hakata Station, take the JR Kagoshima Chuo Line (about 15 minutes on the Rapid train) and get off at JR Futsukaichi Station. Transfer to Nishitetsu Futsukaichi Station on foot (12 minutes) or by bus (5 minutes). Take the Nishitetsu Dazaifu Line and get off at Nishitetsu Dazaifu Station. The Museum is a 10 minute walk from the station.

●Car

On the Kyushu Expressway, about a 20 minute drive from either Dazaifu I.C. or Chikushino I.C. via Takao Intersection. On the Fukuoka Urban Expressway, about a 20 minute drive from Mizuki exit via Takao Intersection.

●Taxi

About 15 minutes from JR Futsukaichi Station, or 30 minutes from Fukuoka Airport.

●Nishitetsu Bus

From the Hakata Bus Terminal (bus stop no. 11), take the bus to Dazaifu and get off at Nishitetsu Dazaifu Station (the bus ride is about 40 minutes). The Museum is a 10 minute walk from the station.



TOKYO NATIONAL RESEARCH INSTITUTE FOR CULTURAL PROPERTIES



13-43 Ueno Park, Taito-ku, Tokyo, 110-8713
Phone: +81-3-3823-2241
<https://www.tobunken.go.jp/>

Access



●Train

JR Line: 10 minute walk from the South Exit of Uguisudani Station, or 15 minute walk from the Park Exit of Ueno Station.

Ginza or Hibiya Tokyo Metro Line: 20 minute walk from Ueno Station.

Chiyoda Tokyo Metro Line: 20 minute walk from Nezu Station.

Keisei Line: 20 minute walk from Keisei Ueno Station.



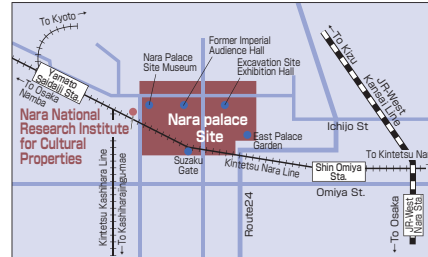
NARA NATIONAL RESEARCH INSTITUTE FOR CULTURAL PROPERTIES



2-9-1 Nijo-cho, Nara City, Nara Prefecture 630-8577
Phone: +81-742-30-6733
<https://www.nabunken.go.jp/>

Access

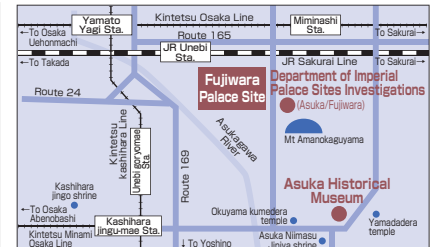
Heijo Area



The Institute and the Nara Palace Site Museum

- Train
Kintetsu Line: 10 minutes from the North Exit of Yamato Saidaiji Station.
- Bus
From JR and Kintetsu Nara Stations, take the Nara Kotsu Bus and get off at the Nijocho bus stop.

Asuka and Fujiwara Area



Department of Imperial Palace Sites Investigations (Asuka/Fujiwara)

- Taxi
20 minutes from Kintetsu Yamato Yagi Station.
- The Asuka Historical Museum
- Taxi
20 minutes from Kintetsu Kashihara Jingu Mae Station.
- Bus
From either Kintetsu Kashihara Jingu Mae Station or Kintetsu Asuka Station, take the Kame Bus and get off at the Asuka Okuyama Asuka Historical Museum West bus stop.
From JR/Kintetsu Sakurai Station, take the Nara Kotsu Bus and get off at the Asuka Historical Museum bus stop.

Visitor Information

● Nara Palace Site Museum

Hours: 9:00-16:30 (free admission; last entry at 16:00)
Closed: Mondays (if Monday is a national holiday, the Museum will be open on Monday and closed on Tuesday) and during the year-end and New Year holiday (December 29-January 3)
Phone: +81-742-30-6753 (Collaboration Promotion Division)

● Exhibition Room of the Fujiwara Palace Site

Hours: 9:00-16:30 (free admission)
Closed: During the year-end and New Year holiday (December 29-January 3) and during exhibition renewal periods
Phone: +81-744-24-1122 (Department of Imperial Palace Sites Investigations for Asuka and Fujiwara)

● Asuka Historical Museum

Hours: 9:00-16:30 (last entry at 16:00)
Closed: Mondays (if Monday is a national holiday, the Museum will be open on Monday and closed on Tuesday) and during the year-end and New Year holiday (December 26-January 3)
Admission: Adults: 350 yen
University students: 200 yen
※An additional charge may be required for special exhibitions
※Any person with disabilities and one accompanying caregiver are admitted free
※Persons over 65 or under 18 are admitted free
Phone: +81-744-54-3561 (Asuka Historical Museum)

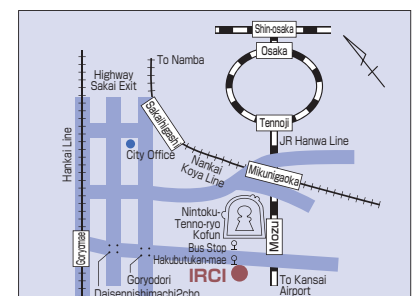


INTERNATIONAL RESEARCH CENTRE FOR INTANGIBLE CULTURAL HERITAGE IN THE ASIA-PACIFIC REGION (IRCI)



Sakai City Museum, 2 cho Mozusekiun-cho, Sakai-ku, Sakai City, Osaka 590-0802
Phone: +81-72-275-8050
<https://www.irci.jp>

Access



- Train
JR Hanwa Line: 6 minutes from Mozu Station.
- Bus
Nankai Bus: 4 minutes from the Sakaishi Hakubutsukanmae bus stop.



Projects of the National Institutes for Cultural Heritage

The Undertakings of the National Institutes for Cultural Heritage include:

1

Preservation and Transmission of Tangible Cultural Properties, and Utilization of Cultural Properties to Disseminate Japan's History and Traditional Culture Nationally and Internationally

(1) Collection and Preservation of Tangible Cultural Properties, and Transmission of Tangible Cultural Properties to Future Generations

As core institutions involved in the preservation and transmission of history and traditional culture, each museum collects objects according to its own individual collection policy to ensure that its collection is systematically and historically balanced.

We also work closely with the Agency for Cultural Affairs to encourage donations and long-term loans from private owners, utilizing the System of Enrolled Art Objects, for example, or by improving the inheritance tax system to make donations of objects easier.

Japan's cultural properties are the precious assets of the Japanese people. In order to pass on this heritage to future generations, we implement thorough management of items in the collections, and make efforts to improve the environments for these items while working systematically to conserve them, with those requiring urgent treatment given priority. This work is carried out through the coordinated efforts of NICH's conservators and professionals of conservation science as well as specialists (both internal and external) in the fields of conservation science and restoration technology, using both traditional techniques and modern scientific methods. Conservation studios and other facilities also recognize the need to protect cultural properties from natural disasters, and are working with the government to make further preparations.

■Acquisition

We continually strive to acquire cultural properties through purchases and donations with the aim of: (1) building collections that are both systematically and historically balanced, and (2) preventing the dispersion of private collections and the export of tangible cultural properties from Japan. Furthermore, the four museums each accept long-term loans from temples, shrines, and private collectors in order to further enhance their distinctive regular exhibitions.

Number of Items in the Museum Collections

(Entries)

Total			Tokyo National Museum			Kyoto National Museum			Nara National Museum			Kyushu National Museum		
Total	National Treasures	Important Cultural Properties	Total	National Treasures	Important Cultural Properties	Total	National Treasures	Important Cultural Properties	Total	National Treasures	Important Cultural Properties	Total	National Treasures	Important Cultural Properties
131,433	135	1,006	119,942	89	648	8,150	29	200	1,929	13	114	1,412	4	44

Nara National Research Institute holds 1 National Treasure and 5 Important Cultural Properties. (Figures as of March 31, 2021)

Nara National Research Institute for Cultural Properties	
National Treasures	Important Cultural Properties
1	5

Number of Items on Long-term Loan to the Museums

(Entries)

Total			Tokyo National Museum			Kyoto National Museum			Nara National Museum			Kyushu National Museum		
Total	National Treasures	Important Cultural Properties	Total	National Treasures	Important Cultural Properties	Total	National Treasures	Important Cultural Properties	Total	National Treasures	Important Cultural Properties	Total	National Treasures	Important Cultural Properties
12,495	197	1,201	2,651	54	262	6,547	88	618	1,988	53	309	1,309	2	12

(Figures as of March 31, 2021)

■Conservation and Restoration

Tangible cultural properties preserved in museum collections need to be conserved approximately once every 100 years. The Institutes carry out two levels of conservation work: minimal treatments that allow for the safe display and storage of the objects: and full-scale treatments, carried out systematically in accordance with the conditions of the objects.

(2) Exhibitions

We disseminate information both nationally and internationally to promote understanding of the history and traditional culture of Japan and other Asian regions. For this purpose, we hold attractive exhibitions and high-quality displays that reflect both visitor needs and the latest academic trends, while also taking into consideration the needs of international cultural exchange.

In addition, we constantly strive to make our museums more visitor-friendly and more in tune with 'new lifestyles' by setting flexible opening hours and creating multilingual and accessible environments, with extensive information for visitors to enhance the overall museum experience. We are also making improvements to museum management in response to visitor feedback.

■Exhibitions

Each museum holds its own distinctive regular and special exhibitions to provide opportunities for visitors to engage with traditional art and archaeological objects, including National Treasures and Important Cultural Properties. We also collaborate with museums overseas to hold exhibitions that introduce a variety of cultures.

■Number of Visitors (FY 2020)

Total	Tokyo National Museum	Kyoto National Museum	Nara National Museum	Kyushu National Museum
800,183	375,575	170,494	122,452	131,662



Feature Exhibition, The Wild World of Kyuhaku (Kyushu National Museum) (June 2-July 12, 2020)



Thematic Exhibition, Japan and the World: 300 years of Global Exchange (Tokyo National Museum) (November 25, 2020-January 11, 2021)

(3) Education and Outreach Activities

To promote understanding of the history and traditional culture of Japan and other Asian regions, we provide a variety of educational programs, such as lectures and workshops, in cooperation with schools and other educational institutions, based on a consideration of 'new lifestyles.'

Furthermore, we work with universities to provide professional training and we support volunteer activities with the aim of further improving our educational programs. We also implement training programs for museum professionals, conservators, and others.

Finally, we actively utilize the internet to disseminate information about cultural properties, collect and display materials, and publicize details about exhibitions and educational activities to a domestic and international audience.



Find your favorite Kannon! (Kyoto National Museum) (July 23-September 13, 2020)



Collaboration with Nara City: Learning about World Heritage (Nara National Museum)

(4) Research on the Collection, Preservation, and Exhibition of Tangible Cultural Properties (namely fine and applied arts), and Educational Activities

We conduct surveys and research relating to the collection, preservation, and exhibition of tangible cultural properties, as well as educational activities, on a systematic basis; organize international symposia to which leading researchers are invited; arrange for NICH staff to work at overseas research institutes and attend international conferences; and conduct research while accumulating the latest information.

The results obtained from our surveys and research are publicized using a variety of methods, including publications and the internet, thereby contributing to the transmission of cultural properties to the next generation and to the promotion of Japanese culture.



Preparation of "Welcome to the Underwater Archeological Sites Handbook!", a pamphlet introducing our research on improving and expanding the system for safeguarding underwater archeological sites (a project carried out by Nara National Research Institute for Cultural Properties and Kyushu National Museum on behalf the Agency for Cultural Affairs).

(5) Contribution to Museum-related Activities in Japan and Abroad

We actively loan our collections out for exhibitions at other museums within Japan and overseas based on a comprehensive consideration of conservation conditions and environments.

We also strive to exchange information with and provide specialist/technical guidance and advice to other museums and galleries within Japan and overseas.

International Symposium: "Creating a Global Museum Community through the Arts of Japan: Challenges in and after the Era of COVID-19" (2020 Curatorial Exchange Program for Japanese Art Specialists Abroad Planning Committee) (January 30, 2021)



(6) New Initiatives Concerning the Transmission of Cultural Heritage Through the Promotion of Cultural Properties

In July 2018, The National Center for the Promotion of Cultural Properties (CPCP) was formally established in the headquarters of the National Institutes for Cultural Heritage to serve as the national center for the display and utilization of Japan's cultural properties. While carefully maintaining the right balance between conservation and use of cultural properties, the CPCP is committed to providing opportunities for people at home and abroad to learn about Japan's priceless cultural heritage.

The CPCP's core activities are as follows.

- 1) Promotion of model projects and development of content which enable people to come into contact with cultural properties

The CPCP collaborates with private and public organizations to create reproductions of cultural properties using advanced technologies such as virtual reality, augmented reality and 8K resolution video. These reproductions provide the public with user-friendly formats for interacting with and learning about Japan's cultural properties.

- 2) Promotion of the lending of items in the collections of national museums and provision of relevant advice

The CPCP pursues loan projects aimed at facilitating the display of cultural properties from national museum collections at museums and galleries across Japan. To this end, the CPCP bears the costs of object transportation and advertising, for example, and it also pursues initiatives aimed at conveying the appeal and value of our cultural heritage to a wider audience.

- 3) Promotion of the creation of cultural property digital resources and distribution of information throughout Japan and the world

The CPCP aims to improve the user-friendliness of NICH's digital resources by consolidating those currently maintained separately by each national museum and research institute. These resources are being consolidated into the "e-Museum" website, a website that presents high-resolution images of approximately 1,100 National Treasures and other important cultural properties from the collections of the National Museums, and "ColBase," a website that allows users to search all of the items in the NICH-affiliated institutions' collections.

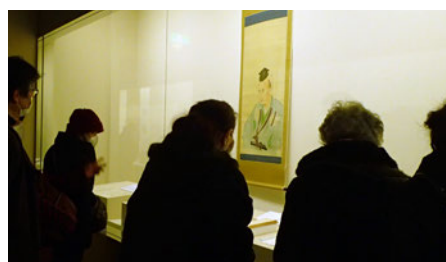
- 4) Consultation, advice, and support concerning the preservation of cultural properties

The CPCP provides research assistance, consultation services, and general inquiry assistance regarding conservation environments of museums. The CPCP also holds workshops and seminars about storage environments and personnel development to give other museums a reliable resource for conservation-related issues.

- 5) In addition, as part of our fund-raising activities, we also implement initiatives to raise funds from a wide range of sources to support projects relating to the conservation and utilization of cultural properties.



Creation and utilization of a high-definition replica (Family Gallery TNM and "Art Tunes!" Present: Becoming Japanese Art—Round Two!)



National Museum Collection Loan Promotion Project (FY 2020): Koga Historical Museum, Visiting a national treasure, Senseki Takami statue and cultural assets related to Furukawa



A seminar on the survey and management of a conservation environment

2 Implementing Research and Collaborative Projects for the Protection of Cultural Properties and Overseas Cultural Heritage

We undertake the following types of surveys and research to contribute to the formation of the framework of knowledge and techniques required to facilitate the transmission of priceless cultural properties to future generations.

(1) Research Leading to New Ideas

We are engaged in undertaking fundamental and systematic research relating to cultural properties (including collaborative research and research-related exchange with other organizations, both in Japan and overseas) and also surveys and research that contribute to the preservation and effective utilization of cultural properties. The results achieved through these surveys and research have led to an increase in the amount of basic data available, facilitated the accumulation of academic knowledge, and provided the basic information needed to support the designation of cultural properties, while also contributing, at individual and collective levels, to the planning and establishment of cultural property preservation measures by national and local government bodies, as well as the evaluation of cultural properties.



Performance of a scaled-down (due to COVID-19) version of the Yudate Shishimai (Lion Dance) (Miyagino, Hakone Town, Kanagawa Prefecture) (Tokyo National Research Institute for Cultural Properties)



Survey of Matsue Shrine (Matsue City, Shimane Prefecture) (Nara National Research Institute for Cultural Properties)

(2) Basic Research for the Improvement of Research and Development Utilizing Science and Technology

We undertake the following types of research and development to support the development of research on the value and preservation of cultural properties:

- ① We contribute to the enhancement of the accuracy and effectiveness of cultural property survey methods through the promotion of R&D work such as the application of science and technology. We also contribute towards the clarification of the background (cultural, historical, and natural environment) against which cultural properties came into being, and the process of change in this background over time.
- ② As a core research center for research relating to cultural property preservation science and restoration techniques, restoration materials, and production techniques, we work to develop new cultural property research techniques that utilize the latest scientific and technological developments. We also promote cutting-edge surveys and research with the aim of fostering joint research and research-related exchange with other institutions both in Japan and overseas.



Spectrophotometric measurement of exposed dyed silk cloths (Tokyo National Research Institute for Cultural Properties)

(3) International Collaboration for the Preservation of Cultural Heritage

We promote the acquisition and analysis of information from abroad regarding cultural heritage, and also promote cooperative programs for its protection. Additionally, we implement human resource development and technology transfer programs for the conservation and restoration of cultural heritage. All of the aforementioned endeavors—which are pursued while utilizing the knowledge, technology, and experience that Japan has accumulated for the protection of cultural heritage—are contributions of international importance. Moreover, through cooperation with researchers and other specialists in the Asia-Pacific region, we conduct research and promote international collaboration for the protection of intangible cultural heritage endangered by natural disasters and other threats. Through such activities for the protection of humanity's shared assets, we contribute to cultural exchange and mutual understanding between countries.



International Workshop on the project "ICH's contribution to SDGs" (Tokyo National Museum, November 2019) (IRC)

(4) Collecting and Collating Information Relating to Cultural Properties, and Publicizing and Utilizing the Results of Surveys and Research

We are working to promote the digitalization of information relating to cultural properties and expand related specialist archives, as well as organizing public lectures and international symposia, and expanding the content included on the websites of the individual facilities that make up the NICH, with the aim of furthering the collection, collation and preservation of information relating to cultural properties, and of ensuring that such outcomes are widely publicized and disseminated. We are also working to expand the displays of survey and research results held at the Nara Palace Site Museum, Exhibition Room of Fujiwara Imperial Site, and Asuka Historical Museum of the Nara National Research Institute for Cultural Properties, so as to provide the general public with a more in-depth understanding of related areas.



54rd Public Lecture: "Pathway from Form, Pathway to Form" (Tokyo National Research Institute for Cultural Properties)

(5) Provision of Training for, and Collaboration with, Local Government Authorities in Relation to Cultural Properties

We make effective use of results obtained from past surveys and research to contribute to the enhancement of knowledge and techniques through the implementation of training tailored to the needs of local government authorities. We also cultivate the core human resource that will play key roles in the preservation of Japan's cultural properties in the future, through collaborative education projects in conjunction with university graduate schools. After the Great East Japan Earthquake of 2011, we played a central role in activities conducted to rescue cultural properties at the request of the Agency for Cultural Affairs. Making effective use of this experience, we are also undertaking research projects and capacity building aimed at putting in place a nationwide system for coordination and collaboration so as to develop a network for safeguarding and rescuing cultural properties in the event of future large-scale disasters such as major earthquakes.



A workshop from the 'Preservation Science Course: Artifacts Made of Metal I' (Nara National Research Institute for Cultural Properties)

(6) Cultural Heritage Disaster Risk Management Initiatives

The Cultural Heritage Disaster Risk Management Center was established in the head office of the Independent Administrative Institution National Institutes for Cultural Heritage (NICH) on October 1, 2020. The Center is tasked with setting up a framework to protect a wide-range of cultural properties from frequently-occurring disasters in a manner that utilizes the broad network of organizations already active in the field of cultural heritage. To this end, the Center undertakes the following initiatives based on the three core missions of (1) 'Reducing disaster risk' in order to safeguard our cultural heritage, (2) 'Building systems and developing technologies' to save disaster-hit cultural properties as quickly as possible, and (3) 'Providing support for rescue operations' for cultural properties when disasters actually occur.

Initiatives

(1) Building regional disaster prevention frameworks

The Center is building regional cultural property disaster prevention frameworks in close cooperation with other institutions involved in the field of cultural heritage, such as local governments, galleries and museums, university research institutions, and local historical materials networks.

(2) Formulating guidelines for disasters

The Center is engaged in the formulation of guidelines to facilitate the swift commencement of cultural property rescue operations when disasters occur.

(3) Developing technologies related to the rescue, storage and display of cultural properties

The Center is engaged in the development of technologies for the regular storage and display of cultural properties and for the rescue of cultural properties when disasters occur.

(4) Raising awareness and disseminating information

The Center seeks to raise awareness and spread knowledge through the provision of instruction, advice and training, for example, and it also disseminates information about its activities to a wide audience both within Japan and overseas.

(5) Collecting and utilizing information related to cultural heritage disaster prevention

The Center collects information about cultural heritage disaster prevention and it examines ways to utilize this information to improve the functionality of Japan's cultural heritage disaster prevention system.



An on-the-ground survey of disaster damage



Producing a YouTube video entitled "Cultural Property Disaster Prevention 10 Years After the Great East Japan Earthquake" as part of activities aimed at raising awareness and disseminating information

3 New Projects

We are undertaking the following new initiatives, with the aim of properly exercising our policy implementation function as Japan's national center for museums and cultural property research, and of ensuring that we implement policies effectively and efficiently.

(1) Japan Cultural Expo

Taking advantage of the opportunity provided by the 2020 Tokyo Olympics and Paralympics, Japan's Agency for Cultural Affairs is joining forces with related local government authorities, cultural institutions, and other groups to organize the Japan Cultural Expo, which will showcase Japanese aesthetics and values both domestically and internationally. As part of the Japan Cultural Expo, art exhibitions, performing arts shows, and cultural and artistic festivals that embody the Japanese ideal of beauty will be held throughout Japan, making this the largest project of its kind ever implemented.

The NICH will also participate in the Japan Cultural Expo and we will organize special exhibitions, thematic exhibitions and events to promote the diversity and broad appeal of Japanese culture, both within Japan and overseas. These activities will also contribute to handing down and further developing Japanese arts and culture, and to further enhancing international understanding of Japan.



Logo for the Japan Cultural Expo



TOKYO NATIONAL MUSEUM

As Japan's foremost museum in the humanities field, Tokyo National Museum collects, preserves, manages, and displays cultural properties from across Japan and other Asian regions, while also conducting research and providing educational programs.



ZENIYA Masami
Executive Director
Tokyo National Museum

The Tokyo National Museum was established in 1872, making it the oldest museum in Japan.

We collect, preserve, restore, and display a large number of National Treasures and Important Cultural Properties as well as around 120,000 tangible cultural properties, mainly from Japan and various Asian regions. We also conduct surveys and research in addition to providing educational programs on them.

The Museum is working to develop more appealing comprehensive cultural exhibitions by holding seasonal events in addition to its display of collected and preserved works. We also run school programs, guided tours, workshops, and various other programs that help participants appreciate cultural properties while becoming more familiar with and further understanding them through, for example, art-making experiences.

Additionally, as Japanese culture attracts global attention, we will play a central role in disseminating it to the world and will strive to become a more appealing museum. To this end, we are formulating and implementing the TNM Plan for a New ERA with the goals of promoting easy-to-understand exhibition commentary and multilingual support as well as creating a comfortable viewing environment.

We will continue in our efforts to make the Tokyo National Museum more enjoyable for everyone, including children and adults, as well as visitors from around the world.

Exhibitions

●Regular Exhibitions

The regular exhibitions comprise the core function of the museum's exhibition activities, displaying works from the museum collection as well as objects on loan to the museum. Exhibits are rotated periodically, with an approximate total of 400 rotations annually. The regular exhibition galleries are as follows:

HONKAN (Japanese Gallery): The 2nd floor provides an overview of the history of Japanese art in chronological order from the Jomon to the Edo period. The exhibits on the 1st floor are categorized by genre and include sculptures, ceramics, and swords.

TOYOKAN (Asian Gallery): This building is dedicated to artworks and archeological artifacts from China, the Korean Peninsula, Southeast Asia, Central Asia, India, Egypt, and other regions.

HEISEIKAN: The Japanese Archaeology Gallery located on the 1st floor displays objects, such as *dogū* and *haniwa* clay figurines as well as bronze bells, dating from the Paleolithic through to the Edo period; the Thematic Exhibition Room, also on the first floor, is used for thematic and educational displays.

The Gallery of Horyuji Treasures: This building exhibits objects selected from over 300 cultural properties donated to the Imperial Family by Horyuji Temple in Nara.

HYOKEIKAN: This building has been used for special exhibitions and special events in recent years.

Kuroda Memorial Hall: This building was built through a bequest from one of the most renowned painters of modern Japan, Kuroda Seiki, and is used to exhibit his works.

●Thematic Exhibitions

Thematic exhibitions focus on specific themes and are held as part of the Museum's regular exhibitions. The following are examples of those scheduled for fiscal year 2021 (the dates given are tentative):

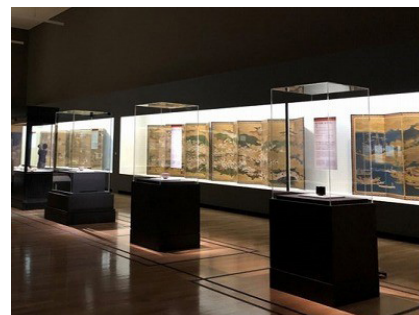
- Nachi: The Hidden Treasures of a Sacred Land (June 8-July 18, 2021)
- The Noh and Kyōgen Masks of Kasuga Shrine in Seki (July 20-September 26, 2021)
- Chinese Paintings and Calligraphy Imported to Edo Japan (tentative) (September 7-October 17, 2021)
- Buddhist Sculptures from Sensōji Temple (tentative) (September 28-December 19, 2021)
- History Lessons from the Roof Tiles of Tōdai-ji Temple (October 19-December 12, 2021)
- Southern Chinese Ceramics that Swept Japan (tentative) (December 21, 2021-February 20, 2022)



New Year's Celebration at the Tokyo National Museum: Year of the Ox (January 2-31, 2021)



Special Exhibition KIMONO: Fashioning Identities (June 30- August 23, 2020)



Special Exhibition, Momoyama: Artistic Visions in a Turbulent Century (October 6-November 29, 2020)

●Special Exhibitions

Special exhibitions are held to share the results of our research and to meet visitor interest. The following are examples of special exhibitions scheduled for the fiscal year 2021:

※The exhibition dates are subject to change.

- Special Exhibition, National Treasure: Frolicking Animals (April 13-June 20, 2021) *This exhibition was temporarily suspended from April 25 to May 31
- Special Exhibition, Sacred Treasures from Ancient Nara: The Eleven-Headed Kannon of Shōrinji Temple (June 22-September 12, 2021)
- Special Exhibition, The 1400th Memorial for Prince Shōtoku Hōryūji Prince Shōtoku and Treasures of Early Buddhist Faith in Japan (July 13-September 5, 2021)
- Special Exhibition, Commemorating the 1200th Anniversary of Saichō's Death Buddhist Art of the Tendai School (October 12-November 21, 2021)

■Acquisition, Conservation, and Restoration

The Museum seeks to create a comprehensive display of Asian cultural properties with a focus on Japan through the acquisition of works of art by purchase, donation, and loan. We also carry out a variety of collection management measures to allow deteriorated objects to be safely exhibited in the future. These measures include enhancing gallery and storage environments, improving display and transportation methods, conducting collection assessment, as well as performing about 40 full restorations and 240 emergency treatments of works annually.

■Education

To provide a better museum experience for visitors, we offer opportunities for as many people as possible to get to know the museum, and we help them to develop a deeper understanding of Japanese and Asian culture. By collaborating with schools and developing volunteer activities, we strive to establish a pioneering model for engaging museum projects while promoting effective educational programs that reflect our role as a leading museum in Japan.

○Providing learning opportunities

Gallery talks, seminars, lecture series, workshops, and "behind the scenes" tours introducing the Museum's preservation and restoration work, and other exhibition-related events.

○Educational and thematic exhibits called "Family Galleries"

○Collaboration with schools

School programs (art appreciation programs, work experience programs, and programs for visually impaired students)

Teacher training (in relation to Special Exhibitions and Regular Exhibitions)

○Partnerships with universities

Campus Members System and internship programs for graduate students

○Volunteer activities

Assistance for educational activities, visitor information, and guided tours

※Some programs have been moved online.

※These activities may be changed or cancelled due to COVID-19.

■Research

We conduct research on cultural properties originating in Asia, with a focus on Japan. Research outcomes are reflected in the museum's collection, and in our collection and exhibition activities. Research is partially supported by Grants-in-Aid for Scientific Research and other grants for cultural activities. Research conducted in fiscal year 2021 includes the following:

- Special research projects on the treasures of Horyu-ji Temple donated to the Imperial Household in 1878, including calligraphy, decorative arts, sculpture, paintings, and artifacts
- Research on cultural properties at temples and shrines in the Kanto region
- Research on eastern peoples and eastern archeological materials
- Joint research on the composition of silk and dyed textile used in arts and crafts
- Research related to "Nachi: The Hidden Treasures of a Sacred Land" and other Thematic Exhibitions

Brief History

- 1872: Opened as the Museum of the Ministry of Education, on the occasion of Japan's first public exposition held by the ministry in the Yushima Seido, Tokyo.
- 1875: Transferred to the Ministry of the Interior. The museum had eight exhibition categories at this time: natural products, agriculture & forestry, industrial technology, art, history, education, religion, and army and navy.
- 1882: Moved to the present location, a site formerly occupied by the headquarters of Kan'eiji temple.
- 1889: Reorganized as the Imperial Museum under the supervision of the Imperial Household Agency.
- 1900: Renamed the Tokyo Imperial Household Museum.
- 1909: Hyokeikan opened.
- 1923: Former Honkan building destroyed in the Great Kanto Earthquake.
- 1925: Natural history collections transferred to the Tokyo Museum of the Ministry of Education (present-day National Science Museum) and other institutions.
- 1938: Present Honkan building opened.
- 1947: Transferred to the Ministry of Education and renamed the National Museum.
- 1952: Renamed the Tokyo National Museum.
- 1964: The Gallery of Horyuji Treasures (inaugural building) opened.
- 1968: Affiliated with the Agency for Cultural Affairs. Toyokan opened.
- 1984: The Shiryokan (the Research and Information Center) opened.
- 1999: The Gallery of Horyuji Treasures (current building) and Heiseikan opened.
- 2001: Became the Independent Administrative Institution National Museums, Tokyo National Museum.
- 2007: Integrated into the Independent Administrative Institution National Institutes for Cultural Heritage as the Tokyo National Museum.

Facilities

		(m ²)		
Land Area	120,270 (including the Kuroda Memorial Hall and the Yanase Villa)			
Buildings	Building Area	23,639	Gross Floor Area	78,446
Exhibition Buildings	Exhibition Area Total		18,199	
	Repository Area Total		11,042	
Honkan	Building Area	6,602	Gross Floor Area	22,416
	Exhibition Area	6,573	Repository Area	4,028
Toyokan	Building Area	2,892	Gross Floor Area	12,531
	Exhibition Area	4,250	Repository Area	1,373
Heiseikan	Building Area	5,542	Gross Floor Area	19,406
	Exhibition Area	4,471	Repository Area	2,119
The Gallery of Horyuji Treasures	Building Area	1,935	Gross Floor Area	4,031
	Exhibition Area	1,462	Repository Area	291
Hyokeikan	Building Area	1,130	Gross Floor Area	2,077
	Exhibition Area	1,179	Repository Area	0
Kuroda Memorial Hall	Building Area	724	Gross Floor Area	1,996
	Exhibition Area	264	Repository Area	25
Others	Building Area	4,814	Gross Floor Area	15,989
			Repository Area	3,206



An online monthly lecture



Family Gallery TNM and "Art Tunes!" Present: Becoming Japanese Art—Round Two!



A survey of textiles as part of a special research project on decorative arts



KYOTO NATIONAL MUSEUM

The Kyoto National Museum collects, preserves, manages, and exhibits cultural properties, while also conducting research and educational activities. It focuses on cultural properties from the Heian period to the Edo period, a time when Kyoto was the capital of Japan.



MATSUMOTO Nobuyuki

Executive Director
Kyoto National Museum

Kyoto prospered as Japan's cultural center for over a thousand years, from the relocation of the capital in 794, which marked the beginning of the Heian period, right through to the Meiji Restoration in 1868.

Kyoto National Museum was established in 1897 (Meiji 30) in Higashiyama, Kyoto, an area steeped in these traditions. Since then, while functioning as a core institution for the preservation and transmission of Kyoto's tangible cultural properties, the museum has also worked to disseminate the value and appeal of Japan's traditional culture to a wide audience, both nationally and internationally.

We constantly strive to maintain a high level of activities, even during these difficult times. While deepening our response to globalization and the spread of information technology, we endeavor to serve as a center for schooling and lifetime learning, a nexus of exploration and creativity, a place of leisure, and a hub of domestic and international tourism. In this way, we hope to build strong roots with the local area while also being a museum that can be appreciated and enjoyed by everyone.

Exhibitions

●Collection Galleries

The Collection Galleries in the Heisei Chishinkan Wing, which opened in September 2014, include thematic galleries for ceramics, archeological relics, paintings, calligraphy, decorative and applied arts, and sculpture. The galleries showcase some of the finest pieces from the museum's 14,000 items (including items on long-term loan), and enable visitors to experience some of the most outstanding examples of Kyoto's unique cultural heritage. The items on display are changed periodically, so visitors can expect to see different items on subsequent visits.

●Exhibitions

※The exhibition dates are subject to change.

- Priest Gyōnen 700th Memorial Special Exhibition *The Buddhist Legacy of Jianzhen (Ganjin) and His Successors* (March 27- May 16, 2021) ※This exhibition was temporarily suspended from April 25 to May 11
- Special Exhibition *National Treasures of Kyoto: Preserving the Cultural Heritage of Japan's Ancient Capital* (July 24- September 12, 2021)
- Special Exhibition *Masterpieces from the Hatakeyama Memorial Museum of Fine Art: Noh, Chanoyu, and Rinpa* (October 9-December 5, 2021)
- Feature Exhibition *Olympia Meets Japanese Art* (June 5-July 4, 2021)

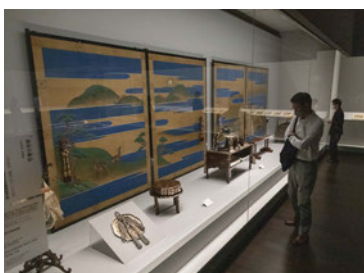
※Please note that due to the current closure of Meiji Kotokan (Main Hall), the Heisei Chishinkan Wing is being used alternately for both Special Exhibitions and Collections Exhibitions.



Heisei Chishinkanwing Wing



Special Exhibition *Kannon Worship: The Thirty three Pilgrimage Sites of Western Japan* (July 23-September 13, 2020)



Special Exhibition in Celebration of the Emperor's Enthronement *Treasures from the Imperial Palace* (October 10-November 23, 2020)



Feature Exhibition Celebrating the 40th Anniversary of the Conservation Center for Cultural Properties *The Conservation of Japanese Art* (December 19, 2020-January 31, 2021)

Collection, Preservation, and Restoration of Cultural Properties

Since the museum's establishment, numerous treasures from historical temples and shrines have been entrusted to the Kyoto National Museum. Meanwhile, the number of cultural properties in the collection has increased yearly through purchases and donations, with a focus on art or archaeological items related to Kyoto culture. These cultural properties must be restored and preserved appropriately so that they may be enjoyed and appreciated by future generations. The Conservation Center for Cultural Properties, the first comprehensive conservation facility for cultural properties in Japan, was established in 1980 to meet that need.



Conservation work underway in the Conservation Center for Cultural Properties

Educational Activities

We undertake a variety of activities via our exhibitions, web-site, and outreach to schools, in order to help people learn more about the museum's exhibitions and collections, and to stimulate interest and concern for cultural properties.

○Activities held to enhance understanding of exhibition contents and exhibits

- The museum holds various lectures and seminars including the Saturday Lectures and Commemorative Lectures. It also operates the "Museum Cart" hands-on experience booths (staffed by "Kyohaku Navigators" volunteers), and implements various types of workshops, as well as distributing museum guide brochures, explanatory sheets, and the "Museum Dictionary." It also loans audio guides for juniors, etc.

○Activities held to stimulate interest in cultural properties

- The museum organizes summer lectures, symposia and other lecture events, as well as arranging visits to elementary schools and junior high schools in Kyoto by "Cultural Property Sommeliers" making use of high-resolution digital reproductions of important works of art (Cultural Properties School Outreach Classes), and organizing workshops in locations outside the museum.

○The museum works closely with educational institutions, organizing collaborative events.

- Collaborations between the museum and the university sector includes: the Campus Members System; the giving of lectures on historical, cultural and sociological topics by our curators at the Graduate School of Human and Environmental Studies, "Kyohaku Navigators" the training of "Cultural Property Sommeliers"; support for teaching through the use of replicas; the holding of art appreciation events; and the holding of workshops for educators.

○Support for volunteer activities

- Implementation of the "Kyohaku Navigators" and "Cultural Property Sommeliers" systems, and training of "Kyohaku Navigators" and "Cultural Property Sommeliers" volunteers.

※These activities may be changed or cancelled due to COVID-19.



Summer Lectures
(July 31 and August 1, 2020)



Class to become acquainted with cultural properties! by "Cultural Property Sommeliers" Kyoto City Ritsuryo Junior High School (December 14, 2020)

Research

Since 1979, the museum has been implementing an ongoing, comprehensive survey of cultural assets owned by old temples and shrines in the Kinki region of Japan, centered on Kyoto. The results of these activities are published in our "Kyoto National Museum Shrine and Temple Inventory Reports" The museum also continues to undertake research on its collections; the research results are reflected in the museum's displays and published in the Kyoto National Museum Bulletin.



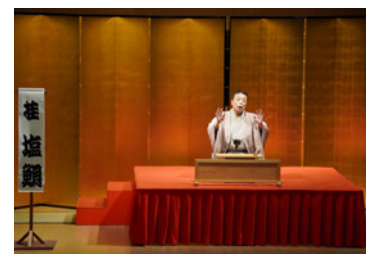
Research underway at shrines and temples

Other Activities

A variety of special events are held to encourage more people to visit the Museum.

○Rakugo at the Museum

Kyoto National Museum has launched the "Rakugo at the Museum" project, whereby performances of Rakugo (traditional comic storytelling, which originated in Kyoto and is an important aspect of Japanese traditional culture) are held on a regular basis.



"Rakugo at the Museum" performance

Brief History

1889: Established as the Imperial Museum of Kyoto under the supervision of the Imperial Household Agency Ministry
1897: First exhibition held (May 1)
1900: Renamed as the Imperial Household Museum of Kyoto
1924: Donated to Kyoto City; renamed as the Imperial Gift Museum of Kyoto
1952: Transferred to the national government; renamed as the Kyoto National Museum
1966: Establishment of the Collections Hall
1968: Affiliated with the Agency for Cultural Affairs
1969: The Special Exhibition Hall, Main Gate, ticket booth and fences are designated as an Important Cultural Property under the name of the Former Imperial Museum of Kyoto
1973: The Saturday lecture series starts
1980: The Conservation Center for Cultural Properties established
1997: A special ceremony was held in October to mark the 100th anniversary of the Museum's founding
2001: The South Gate constructed as part of the 100th Year Anniversary Hall construction project (tentative name)
2001: Transformed into the Independent Administrative Institution National Museum, Kyoto National Museum
2007: Integrated into the Independent Administrative Institution National Institutes for Cultural Heritage, as Kyoto National Museum
2009: Reconstruction begins on the former Collection Hall
2013: Construction of Heisei Chishinkan Wing (new Collection Hall) is completed in August
2014: Heisei Chishinkan Wing is scheduled to open in September
2017: A special ceremony was held in May to mark the 120th anniversary of the Museum's founding

Facilities

(m ²)				
Land Area	53,182			
Buildings	Building Area	13,234	Gross Floor Area	31,044
Exhibition Buildings			Exhibition Area Total	5,657
			Repository Area Total	4,889
Special Exhibition Hall	Building Area	2,896	Gross Floor Area	3,015
	Exhibition Area	2,070	Repository Area	803
Heisei Chishinkan Wing	Building Area	5,568	Gross Floor Area	17,997
	Exhibition Area	3,587	Repository Area	2,710
Former Administration Building	Building Area	606	Gross Floor Area	1,988
Materials Building	Building Area	414	Gross Floor Area	1,125
Conservation Center for Cultural Properties	Building Area	821	Gross Floor Area	2,786
Technical Materials Center	Building Area	101	Gross Floor Area	304
East Repository			Gross Floor Area	1,471
			Repository Area	880
North Repository			Gross Floor Area	682
			Repository Area	496
Others	Building Area	1,707	Gross Floor Area	1,676



NARA NATIONAL MUSEUM

The Nara National Museum collects, preserves, manages and displays cultural properties, while also conducting research and providing educational programming. Its focus is on Buddhist art and the cultural properties of Nara.



INOUE Yoichi

Executive Director
Nara National Museum

Since its opening in 1895, with the support of temples and shrines of the Nara region, the Nara National Museum has been engaged in collecting, preserving, and conducting research and offering educational programs on cultural properties with a special focus on Buddhist art. Through these activities, the museum has introduced to the public the high artistic value and historical background of Japanese Buddhist culture, unique for its syncreticism with indigenous beliefs. Keeping in mind that various cultural properties are tied together in an organic whole with the historical and cultural landscape of Nara, we aim to reach a wide range of people as a conveyor of Nara's culture. To this end, we strive to promote the museum's international activities and a more effective use of information technology.

■ Exhibitions

● Buddhist Art Exhibitions

In addition to holding special exhibitions and feature exhibitions, the museum also displays renowned masterworks of Buddhist art including many designated as National Treasures and Important Cultural Properties. The Nara Buddhist Sculpture Hall features "Masterpieces of Buddhist Sculpture", exceptional Buddhist statues representative of the history of Japanese sculpture from the Asuka to the Kamakura period, dating from around the seventh century to the mid-fourteenth century. The Ritual Bronzes Gallery connected by a corridor features fine works of Chinese ancient bronzes. The West Wing houses "Masterpieces of Buddhist Art", which introduces the essence of Japanese Buddhist art through selected items of painting, decorative art, calligraphy and artifacts. In addition, thematic exhibitions from the permanent collection are occasionally held for themes that lie outside a specific genre.

● Feature Exhibitions

※The exhibition dates are subject to change.

Feature exhibitions are medium-scale exhibitions organized to explore a specific theme.

- *Treasures of Todaiji's Omizutori Ritual (February 5-March 27, 2022)*

● Special Exhibitions

※The exhibition dates are subject to change.

- *Special Exhibition, The 1400th Memorial for Prince Shōtoku Hōryūji Prince Shōtoku and Treasures of Early Buddhist Faith in Japan (April 27-June 20, 2021)*
- *Special Exhibition, Buddhist Art Paradise: Jewels of the Nara National Museum (July 17-September 12, 2021)*
- *The 73rd Annual Exhibition of Shōsō-in Treasures (Fall 2021*) *Dates TBD*
- *Special Exhibition, Sacred Treasures from Ancient Nara: The Eleven-Headed Kannon of Shōrinji Temple (February 5-March 27, 2021)*



Celebrating the Enthronement Ceremonies of His Majesty the Emperor: The Reproduction of Shōsō-in Treasures—Encountering Tenpyō Craftsmanship through the Recreation of 8th Century Works (July 4-September 6, 2020)



The 72nd Annual Exhibition of Shōsō-in Treasures (October 24-November 9, 2020)

■ Collection, Preservation, and Restoration of Cultural Properties

We strive to collect tangible cultural properties, which are valuable assets for the people of Japan, through purchase, donation and loan.

We work to maintain an ideal environment for our collections with meticulous care, by constantly controlling the temperature and humidity in our exhibition and storage areas.

Most Japanese cultural properties are made of extremely fragile materials, such as paper and wood. Therefore, the museum must take proactive steps to preserve these objects for future generations. For this reason, in 2002, we established the Conservation Center for Cultural Properties to handle restoration projects by restorers.

Educational Programs

We promote a variety of educational programs to impart upon audiences an understanding of the importance of cultural properties.

- ① Programs for students
e.g.: World heritage classes (mainly for elementary school students) and educational lectures for teachers
 - ② Lectures and seminars
e.g.: Public lectures, Sunday Talks, the Shōsō-in Academic Symposium, and international symposia
 - ③ Cooperation with universities and colleges
e.g.: Campus Members System, internship programs, and joint lectures with Nara Women's University and Kobe University
 - ④ Promotion of volunteer activities
- ※These activities may be changed or cancelled due to COVID-19.



Volunteering: A briefing session for volunteers



Sunday Talk



Collaboration with Nara University of Education – Workshop video: "Let's make a hand drum with paper cups!"



Research in progress

Research and Survey Activities

We consider research into cultural properties to be the most important activity supporting the foundations of the Nara National Museum as a research institution. Research findings play a part in our exhibition activities and are also reflected in the museum's masterpiece exhibitions and special exhibitions. Reference materials collected through research are available to the public at the Buddhist Art Library. In fiscal year 2021, the Nara National Museum will conduct the following thematic research:

- ① Research on collection items, items on loan to the museum, and related items
- ② Research on Buddhist paintings alongside the creation of reproductions
- ③ Fundamental research on ancient and medieval Buddhist scriptures and sutra-copying
- ④ Comprehensive survey of Buddhist arts and crafts and ancient arts and crafts
- ⑤ Research on artifacts excavated from ancient tombs
- ⑥ Research on the art of sculpture in ancient and medieval Nara
- ⑦ Research on Buddhist art using optical technologies, conducted in collaboration with the Tokyo National Research Institute for Cultural Properties
- ⑧ Research to accompany special exhibitions, etc.
- ⑨ Research to contribute to educational programs in history and traditional culture
- ⑩ Research into the effects on cultural properties of storage area environments, exhibition spaces and display cases
- ⑪ Research on collections from the perspective of cultural asset restoration
- ⑫ Research on collections from the perspective of conservation science

Brief History

1889: Established as the Imperial Museum of Nara under the supervision of the Imperial Household Ministry
 1895: First exhibition held (April 29)
 1900: Renamed as the Imperial Household Museum of Nara
 1914: Establishment of the Shōsō-in Department
 1947: Supervision transferred to the Ministry of Education
 1950: Affiliated with the National Commission for the Protection of Cultural Properties
 1952: Renamed as the Nara National Museum
 1968: Affiliated with the Agency for Cultural Affairs
 1973: Opening of the West Wing
 1980: Establishment of the Buddhist Art Library
 1995: Celebration of the museum's centennial anniversary
 1998: Opening of the East Wing
 2001: Becomes the Independent Administrative Institution National Museum, Nara National Museum
 2002: Opening of the Conservation Center for Cultural Properties; main building's repository reopened as the Ritual Bronzes Gallery
 2007: Integrated into the Independent Administrative Institution National Institutes for Cultural Heritage, as the Nara National Museum
 2010: The main building renamed as the Nara Buddhist Sculpture Hall
 2016: Nara Buddhist Sculpture Hall reopened after restoration (April 29)

Facilities

					(m ²)
Land Area					78,760
Buildings		Building Area	6,786	Gross Floor Area	19,133
Exhibition Buildings					Exhibition Area Total 4,079 Repository Area Total 1,806
Nara Buddhist Sculpture Hall	Building Area	1,512			Gross Floor Area 1,512
	Exhibition Area	1,261			
Ritual Bronzes Gallery	Building Area	341			Gross Floor Area 664
	Exhibition Area	470			
East Wing	Building Area	1,825			Gross Floor Area 6,389
	Exhibition Area	875			Repository Area 1,642
West Wing	Building Area	1,649			Gross Floor Area 5,396
	Exhibition Area	1,473			
Buddhist Art Library	Building Area	735			Gross Floor Area 735
Conservation Center for Cultural Properties	Building Area	319			Gross Floor Area 1,036
Lower Level Passageway					Gross Floor Area 2,152
					Repository Area 164
Others	Building Area	405			Gross Floor Area 1,249

Kyushu National Museum collects, preserves, manages and displays cultural properties, while also conducting research and providing educational programs. The focus is on cultural properties related to Japan's cultural exchanges with other Asian regions.



SHIMATANI Hiroyuki
Executive Director
Kyushu National Museum
(President of the National
Institutes for Cultural Heritage)

Kyushu National Museum (Kyuhaiku) opened its doors in 2005 based on the concept of "understanding the formation of Japanese culture through the perspective of exchanges with Asia". So far, the museum has welcomed more than 17 million visitors thanks to the warm support of the local population and many other people.

In FY2020, the world has undergone a lot of upheaval due the unprecedented COVID-19 situation. Our museum has also had to close at times and cancel exhibitions. During this time, we have tried to find new ways to bring cultural properties close to people in the comfort of their own homes by stepping up the transmission of information over the internet, for example. At the same time, though, we remain committed to our core mission of protecting the valuable cultural heritage passed down by our ancestors and conveying the charm of this heritage to a wider audience. From here on too, we will aim to be a friendly, safe and enjoyable museum for everyone as we strive to achieve the goal of being "more fun than a classroom and easier to understand than a textbook."

■ Exhibitions

● Cultural Exchange Exhibition (Permanent Exhibition)

In order to provide our visitors with opportunities to experience new works each time they visit, Feature Exhibitions are held in the Cultural Exchange Exhibition Gallery. We also strive to create more dynamic and in-depth exhibitions through the use of videos and hands-on displays.

● Feature Exhibitions

The feature exhibitions scheduled for FY2021 are as follows:

- The Colorful World of Ancient Glass An Okayama Orient Museum Collection Showcase (July 6-October 3, 2021)
- Ming Expression in Edo Temples [working title] Commemorating the 350th Death Anniversary of Buddhist Sculptor Fan Daosheng (July 17-October 10, 2021)
- Tewaza Legacy of the Ryukyu Kingdom (October 19-December 12, 2021)
- Hatsune Maki-e Lacquer Trousseau National Treasure from the Tokugawa Art Museum (January 1-30, 2022)

● Special Exhibitions

*The exhibition dates are subject to change.

We plan and hold special exhibitions that beginners can fully enjoy and connoisseurs will enjoy even more. The special exhibitions scheduled for FY2021 are as follows.

- The Reproduction of Shosoin Treasures Encountering Tenpyo Craftsmanship through the Recreation of 8th Century Works (April 20-June 13, 2021)
- Aesthetic Connections Art from the Japanese Imperial Collection (July 20-August 29, 2021)
- In the Embrace of the Mountains and Seas Nature in the Japanese Imagination (October 9-December 5, 2021)
- Commemorating the 1200th Anniversary of Saichō's Death Buddhist Art of the Tendai School (February 8-March 21, 2022)

■ Collection, Preservation and Restoration of Cultural Properties

● Collection

The Museum puts an emphasis on collecting cultural heritage such as fine art, decorative art, archeological materials, historical documents and folk materials that help visitors more easily understand the cultural exchanges between Japan and the rest of Asia as well as the origins of Japanese culture. Moreover, in an effort to further improve displays and exhibitions, we proactively invite temples, shrines and private individuals to donate or entrust their cultural properties to us.

● Preservation

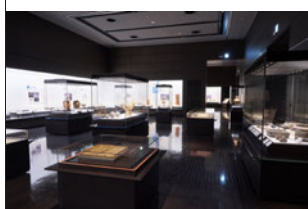
The "storage rooms" of the Museum are where important cultural properties are preserved and stored. They feature a double-walled structure, designed to prevent external air from outside the Museum from directly reaching the cultural properties, and are located in the heart of the building to minimize changes in temperature and humidity. The air conditioning facilities also utilize a constant temperature humidistat, which allows the temperature and humidity of the storage area to be constantly maintained at more or less the same level. Additionally, the walls and ceiling of each storage room are made from materials procured from local suppliers in Kyushu, such as cedar, to help ensure an appropriate humidity level without overly depending on air conditioning devices. The Museum was constructed as a seismically isolated structure, to prevent cultural properties from damage caused by toppling over during earthquakes, for example. The building does not receive a direct impact in the event of an earthquake, and this helps protect the priceless cultural properties located inside.

● Restoration

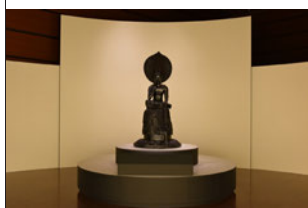
The six conservation and restoration facilities at the Museum (respectively specializing in: the production of paper and other materials used for repair; historical materials, calligraphy and documents; paintings; sculptures; archaeological artifacts; and lacquerware) work in collaboration with the Museum's Science Division, combining traditional methods with scientific research technology. The staff, well experienced in the restoration of Japan's designated cultural properties, conduct projects actively through discussions with curators from fields such as history, art, decorative arts, archaeology and other related areas. The latest technological equipment such as fluorescent X-ray analyzing devices and X-ray CT scanners are also being actively utilized in the scientific analysis of cultural properties to be restored.



Feature Exhibition, Tales of Tenjin
(February 2-March 28, 2021)



Feature Exhibition, Yamato: The
Cradle of Japanese Civilization
(July 28-December 20, 2020)



Special Exhibition, Manifestations
of Mercy Treasures from the
Chūgūji Temple (January 26-March
21, 2021)

Educational and Exchange Activities

Educational Activities

- ① Interactive Exhibition Gallery "Aijippa" showcases the various cultures of regions that had historically interacted with Japan. Other efforts include areas such as educational kits development, visitor experience programs, and collaborative programs with other educational institutions.
- ② Educational programs in association with special exhibitions and the Cultural Exchange Exhibition (permanent exhibition)
 - ・ Programs to improve exhibition understanding
 - ・ Posting videos on YouTube that introduce exhibits
 - ・ Distributing videos of workshops, etc. under the "Kyohaku at Home" program
 - ・ Conducting of workshops
 - ・ Production of guidebooks
- ③ "Kypack" - educational kits to be used in secondary schools
- ④ Operation of the Kyuhaku-go mobile museum
- ⑤ Campus Members System to strengthen ties with universities and other higher educational institutions
- ⑥ Educational activities based on "Kyushu National Museum's Picture Books" for children
- ⑦ Supporting volunteer activities

We support various volunteer activities, including guided tours and "behind the scenes" tours, initiatives to improve the museum environment, and workshop events.



"Kypack"- educational kits to be used in secondary schools

Exchange Activities

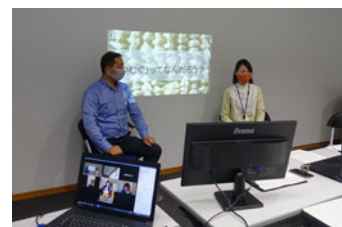
- ① Implementing exchange projects in cooperation with local enterprises for more effective utilization of museum facilities.
 - ② Promoting exchange among Asian museums

Conclusion of cultural exchange agreements with the Buyeo National Museum (Korea), the Goguryeo National Museum (Korea), The Korea National University of Cultural Heritage, the Nanjing Museum (China), the Museum of Inner Mongolia (China), Chinese Center for Cultural Exchange, Sichuan Museum (Chengdu, China), Shenyang Imperial Palace Museum (China), the Shanghai Museum, the Vietnam National Museum of History, and the Fine Arts Department of the Ministry of Culture (Thailand)
 - ③ Hosting international symposia and lecture events
- *These activities may be changed or cancelled due to COVID-19.

Research and Survey Activities

The results of research concerning our main theme of "Cultural Exchange between Japan and Asian Countries" and scientific research on conservation and restoration of cultural properties are actively utilized for our collection, preservation and exhibition activities. Part of our research is financially supported by the government-funded Grants-in-Aid for Scientific Research(KAKENHI) and other private grants for cultural activities.

- ・ Research on using X-ray computed tomography (CT) scanning to analyze the structure of culture heritage artifacts
- ・ Research on improving and expanding the system for safeguarding underwater archeological sites.
- ・ Research on educational outreach programs aimed at enhancing museum visitors' understanding through the use of explanatory panels, booklets, workshops, etc. tailored to exhibition themes
- ・ Research on the conservation and restoration of Japanese and Asian cultural heritage in museums
- ・ Research on the continued use of Integrated Pest Management (IPM) in museum crisis management



Workshop: "The 'KURUKURU SILK' Hands-on Classroom"

Publications

The museum produces publications to promote a wider understanding of our activities

- i) Tofu-seisei (Research Bulletin): This bulletin summarizes the results of the Museum's investigative research efforts (published annually)
- ii) Asiage (Quarterly magazine): An information magazine focusing on the Cultural Exchange Exhibition and special exhibitions (released quarterly)
- iii) Picture Book Series: The Museum produces original picture books for children about Japanese history to encourage understanding and familiarity.

Brief History

- 1994: The Agency for Cultural Affairs (ACA) organized the "committee to investigate the establishment of a new concept-based museum (the Committee)".
- 1996: ACA decided the new museum should be established as the Kyushu National Museum (provisional title) in Dazaifu, Fukuoka.
- 1997: The Committee drew up the "basic framework for Kyushu National Museum (provisional title)".
- 1999: The Committee made the "basic plan for Kyushu National Museum (provisional title)".
- 2000: ACA, Fukuoka Prefecture, and the Kyushu National Museum Promotion Foundation (the Foundation) jointly formulated the "basic construction design" for the Museum.
The ACA and Fukuoka Prefecture jointly organized "experts conference for the establishment of Kyushu National Museum (provisional title)" developed the "permanent exhibition plan".
- 2001: ACA, Fukuoka Prefecture and the Foundation jointly completed the "basic exhibition design".
The Independent Administrative Institution National Museum (the National Museum) established the "preparatory office for the establishment of the Kyushu National Museum".
- 2002: ACA, Fukuoka Prefecture and the Foundation jointly launched the "construction works (the first year of a three-year plan)".
- 2003: The National Museum and Fukuoka Prefecture launched the "preparation of the exhibitions (the first year of a two-year plan)".
- 2004: ACA, Fukuoka Prefecture and the Foundation completed the "construction works".

ACA, the National Museum and Fukuoka Prefecture officially named the Museum as "Kyushu National Museum".

- 2005: The National Museum and Fukuoka Prefecture completed the "preparation of the exhibitions".
The National Museum formally established the Kyushu National Museum. Kyushu National Museum opened to the public on 16 October.
- 2007: The Kyushu National Museum was merged into the IAI National Institutes for Cultural Heritage (NICH).
- 2008: Japan-China-ROK Trilateral Summit Meeting was held at the Kyushu National Museum.
- 2012: Kyushu National Museum welcomed its 10 millionth visitor.
- 2015: 10th anniversary

Facilities

Facilities				(m²)
Land Area	159,844			
Building	Building Area	14,623	Gross Floor Area	30,675
	NICH	9,300	Prefecture	5,780
			Shared Area	15,595
Exhibition and Repository Area	Exhibition Area Total	5,444	NICH	3,844
	Prefecture	1,375	Shared Area	225
	Repository Area Total	4,518	NICH	2,744
	Prefecture	1,335	Shared Area	439

The land and buildings are co-owned by Fukuoka Prefecture and the institution.



TOKYO NATIONAL RESEARCH INSTITUTE FOR CULTURAL PROPERTIES



SAITO Takamasa
Director General
Tokyo National
Research Institute for
Cultural Properties

The Tokyo National Research Institute for Cultural Properties supports the work of the government in the administration of cultural properties by conducting various research, from basic and systematic to practical and advanced, into all kinds of cultural properties, both tangible and intangible. The Institute actively disseminates the results of this research both domestically and internationally. It also provides guidance and advice to regional public bodies and other stakeholders concerning the preservation of cultural properties. Furthermore, it pursues international cooperation projects related to the conservation of cultural heritage in Asia and other regions of the world, including international research initiatives, human resource development, and the transfer of conservation and restoration technologies.

The Institute's survey and research work currently focuses on several priority areas. Firstly, the Institute is working to develop an archive of research results and basic data, etc. accumulated by the Institute over the years. Also, as a part of the Independent Administrative Institution, National Institute for Cultural Heritage, the Institute aims to play an integral role in the area of conservation and preservation through research on the conservation, preservation and publication of museum materials. Furthermore, the Institute collects basic data and prepares visual records of intangible cultural properties from across Japan, with a focus on festivals and performing arts like Noh, for example, with this material then made available to the public.

In addition, the Institute houses the secretariat of the Japan Consortium for International Cooperation in Cultural Heritage, an organization that plays a central role in ensuring Japan makes a coordinated and effective contribution to the conservation of cultural heritage overseas.

The Institute also operates as the East Japan headquarters of the Cultural Heritage Disaster Risk Management Center.

■ Organization

● Department of Art Research, Archives and Information Systems

The Department of Art Research, Archives and Information Systems collects, preserves, collates and publicizes information relating to cultural properties, and also undertakes research on the development of effective methods for the transmission of information, with the aim of expanding the scope of cultural property archives. At the same time, the Department also engages in issues of contemporary relevance when it comes to the study of cultural properties and art history research, for example. The Department also takes the results obtained in these activities as the basis for managing the information systems and public relations activities of the Institute as a whole.



Researching and photographing "Arhat" (Komyoji Temple, Tokyo)

● Department of Intangible Cultural Heritage

The Department of Intangible Cultural Heritage conducts basic research useful for the conservation and transmission of intangible cultural heritage, focusing in particular on Japan's intangible cultural heritage, which includes intangible cultural properties, intangible folk-cultural properties, and techniques for preserving cultural properties. Audiovisual documentation, a significant method for the conservation of intangible cultural heritage, is conducted and new methods of documentation are also investigated.



An on-the-ground survey of the Fukuda Juni Kagura dance (Shinchi Town, Fukushima Prefecture)

● Center for Conservation Science

The Center for Conservation Science implements surveys of cultural property materials, construction and techniques, and collects information that contributes to a more in-depth understanding of cultural properties. In addition, it conducts research into the improvement of restoration materials and techniques and into maintenance management methods. The Center also implements activities relating to the adoption of new survey techniques. Moreover, the Center works closely with those who are actually engaged in the conservation and restoration of cultural properties and their owners.



A survey of gases released by deoxidizing agents

● Japan Center for International Cooperation in Conservation

The Japan Center for International Cooperation in Conservation renders assistance to various countries in Asia and other regions of the world through the conservation and restoration projects of cultural heritage including technical transfer and human resource development. It also promotes the cooperative networks with other relevant institutions, domestic and international, by organizing seminars and meetings. Collection and dissemination of information on cultural heritage and its protection systems is another important task of the Center.

The Center is commissioned to manage the secretariat for the Japan Consortium for International Cooperation in Cultural Heritage.



Mural conservation training for local professionals (Myanmar)

Seminar, Advice, and Guidance

The Institute conducts various training seminars and provides professional advice as well as technical guidance for the protection and utilization of cultural properties. These include the International Course on Conservation of Japanese Paper, annual training for museum curators in charge of conservation, advice on safeguarding intangible cultural properties, inspection assistance and advice on the museum environments, and investigation and advice concerning the conservation of cultural properties.



International Course on Conservation of Japanese Paper



Training for museum curators

Graduate School Education and Public Lectures

The Institute provides the results of its research to the public aiming at nurturing the next generation of experts and raising public interest. The Institute has collaborated with the Tokyo University of the Arts since 1995 and is in charge of its Preventive Conservation Course. In the public lectures, the Department of Art Research, Archives and Information Systems, and the Department of Intangible Cultural Heritage present their research achievements every year.

Dissemination of Research Information

The Institute actively communicates and publicizes the results of its different activities including research studies and international cooperation projects through academic conferences, workshops and symposiums, for example. It also updates its website regularly and it releases publications such as its 'Annual Report,' its 'Outline,' and 'Tobunken News.'



TOBUNKEN Research Collections (<https://www.tobunken.go.jp/archives/>)



The 14th Tokyo National Research Institute for Cultural Properties Department of Intangible Cultural Heritage's Public Lecture: Japanese Traditional Wind Instruments and Their Materials
(Left: KOKETSU Takuya (*Ryūteki* transverse bamboo flute); Right: YATSUKI Junko (*Shō* free-reed mouth organ))

Publications

The Institute publishes periodicals such as *The Bijutsu Kenkyu* (The Journal of Art Studies), *Yearbook of Japanese Art, Research and Reports on Intangible Cultural Heritage*, and *Science for Conservation*. It also publicizes the research and study results through the publication of academic reports and other means.



The Bijutsu Kenkyu
(Journal of Art Studies)



Yearbook of Japanese Art



Research and Reports on Intangible Cultural Heritage



Science for Conservation

Brief History

1930: Established as the Institute of Art Research, an auxiliary organization of the Imperial Academy of Fine Arts
1947: Affiliated with the National Museum
1950: Affiliated with the National Commission for Protection of Cultural Properties
1952: Reorganized and renamed as Tokyo Research Institute of Cultural Properties
1954: Renamed as Tokyo National Research Institute of Cultural Properties
1968: Affiliated with the Agency for Cultural Affairs
2000: Construction of new offices
2001: Restructured as the Independent Administrative Institution, National Research Institute for Cultural Properties Tokyo
2007: Integrated into the Independent Administrative Institution, National Institutes for Cultural Heritage, as Tokyo National Research Institute for Cultural Properties

Facilities

		(m ²)
Land Area		4,181
Building	Building Area	2,258
	Gross Floor Area	10,516



NARA NATIONAL RESEARCH INSTITUTE FOR CULTURAL PROPERTIES



MOTONAKA Makoto
Director General
Nara National Research
Institute for Cultural
Properties

●Department of Planning and Coordination

The work of the Department of Planning and Coordination is assigned to five sections: the Planning and Coordination Section, the Data and Information Section, the International Cooperation Section, the Exhibition Section, and the Photography Section. These sections plan and organize professional training programs for cultural heritage workers at local government agencies and other organizations, organize data systems and enhance related databases, promote multilingualization in the sections, arrange international joint research projects and engage in international cooperation on archaeological sites, exhibit research results at the Nara Palace Site Museum, and carry out photography and the development of new technology.

●Department of Cultural Heritage

The Department of Cultural Heritage consists of the Historical Document Section, the Architectural History Section, the Cultural Landscape Section and the Sites Management Research Section. These sections conduct specialist and comprehensive research in the following areas respectively: calligraphy, ancient books and historical documents; historical and traditional architecture; cultural landscapes; and the maintenance of archaeological sites and historical gardens. The research activities conducted by each section contribute, in a practical manner, to governmental activities concerning the protection of cultural properties, such as the designation, selection, registration, conservation and management of properties. The Department also collaborates with, and provides advice for, local public entities in regard to cultural property administration.

●Department of Imperial Palace Sites Investigations

The Department of Imperial Palace Sites Investigations is organized into five sections: Archaeology Section 1, Archaeology Section 2, Archaeology Section 3, the History Section, and the Architectural Features Section. These conduct interdisciplinary research based on excavational investigations of ancient palaces, temples and tombs located in the Heijo, Asuka and Fujiwara areas. The research results are publicized through presentations, reports and exhibitions; this research also contributes to the preservation and effective utilization of these archaeological remains.

[Department of Imperial Palace Sites Investigations (Heijo)]

This Department is in charge of excavation and research at the Nara Palace Site (Special Historic Site), where the imperial palace and government offices were located in the Nara period (710-784). Systematic research has been in progress since 1959 and over one-third of the 130 hectare site has been excavated and surveyed so far. Finds at the sites of the palace and ancient temples (such as architectural remains, wooden tablets used for writing, earthenware vessels and ceramic tiles) have been verified with reference to historical records, with the Department's empirical research on the Nara period winning widespread plaudits. The Department also provides the results of its research on the Nara Palace Site to the Ministry of Land, Infrastructure, Transport and Tourism (MLIT) as basic data to support the maintenance of the national Nara Palace Site Historical Park.

[Department of Imperial Palace Sites Investigations (Asuka and Fujiwara)]

The Department is in charge of excavation and research in the Asuka and Fujiwara area, Japan's political, economic and cultural center during the period between the 7th and early 8th centuries when the Japanese state was coming into being. The sites in the Asuka district include palaces and residences of elite clans, the sites of temples such as Asukadera (the oldest Buddhist temple in Japan), a workshop that produced ancient coins and glass, a water clock, and various tombs. To the north lies the site of the Fujiwara capital, the first large-scale planned city in Japan, covering a vast area of more than five square kilometers. The interdisciplinary, empirical research being conducted based on the excavations of these sites in the Asuka and Fujiwara areas has made a major contribution towards helping to clarify the historical record of the Asuka period.

As an institution engaged in the comprehensive research of tangible cultural properties, Nara National Research Institute for Cultural Properties researches cultural heritage (such as historical materials and buildings) and conducts excavations, primarily at the Nara and Fujiwara Palace sites. We exhibit and publish the results of this research, for example, and we also carry out research and exhibition programs with the aim of preserving Asuka culture. The Institute also strives to gather and publicize data on archaeological sites through the 'Comprehensive Database of Archaeological Site Reports in Japan.'

All these activities make a significant contribution to cultural heritage research, both nationally and internationally, and they have resulted in academic exchanges with China, South Korea and other countries across Asia. Furthermore, the Institute endeavors to develop new research technologies and methods to conserve, restore and maintain historical sites. We then provide guidance and training to local government specialists, for example, with these technologies and methods also utilized to protect historical sites across the world.

From here on, we hope to make further contributions to the conservation and utilization of cultural properties by pursuing interdisciplinary joint research in other fields too.



Online gallery talks



Surveying Hokeji Temple's garden



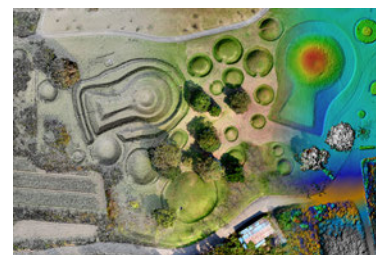
Excavating the Eastern Government Sector, Nara Palace Site



Excavating the Imperial Audience Hall, Fujiwara Palace Site

●Center for Archaeological Operations

The Center for Archaeological Operations consists of four research sections, which undertake practical research relating to the survey, research and conservation of cultural heritage, as well as providing training activities based on the Center's research results, etc. The Conservation Science Section undertakes a wide range of research, from fundamental research to practical research, relating to surveys and analysis of the materials and structures of archaeological objects and the in-situ display of archaeological remains, etc. The Environmental Archaeology Section undertakes research relating to the simulation of ancient environments and how animals and plants were used in the past, etc., through surveys of and research on the remains of flora and fauna. The Dendrochronological Dating Section uses the methods of dendrochronology to advance applied research on techniques for determining the age and origin of wooden cultural heritage items, and for determining how they were made, etc. The Archaeological Research Methodology Section develops surveying and measurement techniques, with a particular focus on the surveying and measurement of archaeological data, with the aim of furthering the development and effective utilization of methods for researching cultural heritage and archaeology. This Section also undertakes disaster archaeology surveys and research.



Photogrammetric measurements of the Tsukahara Burial Mounds, Kumamoto City

●Asuka Historical Museum

The Asuka Historical Museum, a facility that showcases the history and culture of the Asuka Period, was established in 1975 following a decision made by the Japanese Cabinet. Besides the Museum's regular exhibitions, which have thematic displays relating to palaces, stone structures, tombs and temple sites, etc., visitors can also see the reconstructed portion of the eastern cloister of Yamada-dera Temple and objects excavated in and around this site. The Museum holds Special Exhibitions and Feature Exhibitions, with displays focused on the history and cultural heritage of the Asuka Period, displays that present the results of the wide-ranging research undertaken by the Nara National Research Institute for Cultural Properties in an easy-to-understand way, and displays featuring photographs of cultural heritage items, etc. The Museum also hosts lectures and participatory activities, etc.



Exhibiting the remains of Yamadadera Temple's east corridor

●International Academic Exchange

The Nara National Research Institute for Cultural Properties contributes to international exchange and collaboration through activities such as joint research, expert exchange, conservation and restoration, support and training using its expertise and technology, and the Networking Core Centers for International Cooperation on the Conservation of Cultural Heritage project commissioned by the Agency for Cultural Affairs. Furthermore, it also participates in international contribution projects related to cultural properties and conducted by other institutions such as ACCU (Asia-Pacific Cultural Centre for UNESCO).

The Institute's main projects include: (1) joint research with the Chinese Academy of Social Sciences involving comparison of ancient capital sites; (2) joint research with the Henan Provincial Institute of Cultural Heritage and Archaeology, China into artifacts, etc. excavated from kiln sites; (3) joint research with the Liaoning Provincial Institute of Cultural Relics and Archaeology, China, into artifacts belonging to the culture of the Former, Later, and Northern Yan; (4) joint research with the National Research Institute of Cultural Heritage, Korea, into the formation and processes of development of ancient Japanese and Korean culture, as well as exchanges of personnel on excavation sites; (5) research, conservation, and restoration, undertaken with Cambodia's Authority for the Protection and Management of Angkor and the Region of Siem Reap (APSARA), at the Western Prasat Top site, as well as a human resource development project; (6) international dissemination of Japanese archaeology through online resources and publications, in collaboration with the Sainsbury Institute for the Study of Japanese Arts and Cultures in the U.K. We are also working on technology transfer and human resource development for the National Museum of the Republic of Kazakhstan through a Networking Core Centers for International Cooperation on the Conservation of Cultural Heritage project commissioned by the Agency for Cultural Affairs.



Online training as part of the "Knowledge Transfer on the Methodology and Practice of Investigation, Recording and Conservation of Archaeological Remains" program

●Publications

Nara National Research Institute for Cultural Properties publishes periodicals such as *Overview of Nara National Research Institute for Cultural Properties*, *BULLETIN Nara National Research Institute for Cultural Properties*, *NABUNKEN NEWS*, *CAO NEWS* Centre for Archaeological Operations, and *NABUNKEN RONSO*. It also publishes the results of various additional research studies.

Brief History

- 1952: Nara Cultural Properties Research Institute (consisting of the General Affairs Division, the Historical Research Division, the Architecture Research Division, and the Art Research Division) is established at 50 Kasugano-cho, Nara City, as an auxiliary organization of the National Commission for the Protection of Cultural Properties
- 1954: Renamed as the Nara National Cultural Palace Site in Sakihigashi-machi, Nara City
- 1960: The office of the Heijo Palace Site Investigations opened in the former Nara Place Site in Sakihigashi-machi, Nara City
- 1963: Heijo Palace Site Investigation Division is established
- 1968: Affiliated with the Agency for Cultural Affairs (established 1968)
- 1970: Nara Palace Site Museum opened
- 1973: Finance Section, Asuka/Fujiwara Palace Site Investigation Division, and Asuka Historical Museum established
- 1974: Department of General Affairs and the Center for Archaeological Operations established
- 1975: Asuka Historical Museum opened at Okuyama in Asuka Village, Nara
- 1980: Art Research Division transferred to the Research Center for Buddhist Art, Nara National Museum
- 1980: Relocated to 2-9-1 Nijo-cho, Nara City. Heijo Palace Site Investigation Division and the Center for Archaeological operations are transferred together to the new site.
- 1988: New headquarters building of Asuka/Fujiwara Palace Site Investigation Division built at 94-1 Kinomoto-cho, Kashiwara City
- 2001: Restructured as the Independent Administrative Institution National Research Institute for Cultural Properties, Nara
- 2007: Integrated into the Independent Administrative Institution National Institute for Cultural Heritage, as the Nara National Research Institute for Cultural Properties.
- 2013: Relocated to temporary premises located at 247-1 Sakicho, Nara City, while the original head office site is being redeveloped.
- 2018: Following the completion of renovation work on the Institute's headquarters building, the Institute was relocated from temporary premises back to the renovated headquarters building

Facilities

	Land Area	Building (m ²)	
Headquarters Area	8,879	Building Area	2,812
		Gross Floor Area	11,387
Heijo Area	Located on government-owned land, rent fees waived	Building Area	10,631
		Gross Floor Area	16,150
Fujiwara Area	20,515	Building Area	6,016
		Gross Floor Area	9,477
Asuka Area	17,093	Building Area	2,657
		Gross Floor Area	4,404

INTERNATIONAL RESEARCH CENTRE FOR INTANGIBLE CULTURAL HERITAGE IN THE ASIA-PACIFIC REGION (IRCI)



IWAMOTO Wataru

Director-General
International Research
Centre for Intangible
Cultural Heritage in the
Asia-Pacific Region

At the 35th Session of UNESCO General Conference of October 2009, approval was given to Japan to establish an international research centre for intangible cultural heritage in the Asia-Pacific region. After this approval, the Japanese government concluded an agreement with UNESCO in August 2010, and established the International Research Centre for Intangible Cultural Heritage in the Asia-Pacific Region (IRCI) in Sakai City in October 2011, as a Category 2 Centre under the auspices of UNESCO (institutions that serve to contribute to the achievement of UNESCO's strategic objectives).

IRCI's objectives are to promote the UNESCO Convention for the Safeguarding of the Intangible Cultural Heritage (ICH) and its implementation, and to enhance the safeguarding of ICH through instigating and coordinating research in the Asia-Pacific region. Today, many elements of ICH are endangered all over the world due to various factors. The safeguarding of ICH is now undeniably an urgent issue. IRCI collaborates with universities and research institutions in Japan and the Asia-Pacific region to promote research on the practices and methodologies of ICH safeguarding.

■ Activity Plan for FY 2021

IRCI promotes research as an international research hub for ICH safeguarding in the Asia-Pacific region while contributing to its enhancement using Japan's long-term experience in cultural heritage management. Its activities focus on:

1. Promoting Research for ICH Safeguarding
2. Conducting Research on Endangered ICH
3. Cooperating with Sakai City to Promote ICH

In FY2021, IRCI will conduct the following projects.

● Promoting Research for ICH Safeguarding

1. Research Data Collection

In the previous project, IRCI collected research data, predominantly in consultation with individual researchers. In FY2019-2021, by utilising the experience, IRCI has been systematically and sustainably collecting information on the UNESCO Convention for the Safeguarding of ICH and related research. To this end, it has established a collaboration mechanism in cooperation with designated research institutions in the Asia-Pacific region. The collected data from counterparts are gathered by IRCI and added to the IRCI's research database (<https://www.irci.jp/ichdb/>). Then, they are made public. The database comprises approximately 2,500 pieces of information collected from 43 countries in the Asia-Pacific region as of March 2021.

2. Research on ICH's Contribution to Sustainable Development - Education and Community Development

IRCI launched a two-year project to investigate ICH's contribution to SDG4 (quality education) and SDG11 (sustainable cities and communities) in FY2020. In FY2020, IRCI implemented case studies in cooperation with three non-governmental organisations (NGOs) from Bangladesh, Indonesia, and Kyrgyz. In FY2021, the case studies conducted in FY2020 will be analysed and verified through further case studies with these NGOs.

3. Researchers Forum

IRCI has organised the Researchers Forum every other year since FY2017. To commemorate the 10th anniversary of its establishment, IRCI will organise the third forum. This forum will also reflect on IRCI's research projects over the past ten years and IRCI will utilise them for its future orientation. An academic symposium consisting of presentations and panel discussions will be held. Speakers will be selected among researchers from IRCI partner institutions, researchers in the field of ICH, who have collaborated in past programmes.



●Conducting Research on Endangered ICH

Research on ICH Safeguarding and Disaster Risk Management

Asia-Pacific countries are frequently exposed to various natural hazards, including earthquakes, tsunamis, cyclones, floods, and volcanic eruptions, all of which having a severe impact on society. Given such circumstances, IRCI implemented a preliminary research and organised an international workshop to discuss the roles of ICH in disaster preparedness, disaster mitigation, and disaster resilience. As a new project in FY2020-2022, the current state of research on ICH and DRM since 2018 will be studied. Ultimately, the research aims to categorise the disasters into types and provide practical recommendations, including models of DRM and ICH safeguarding measures for each category.

●Cooperating with Sakai City for Promoting ICH

IRCI widely disseminates information and a clear vision of ICH to the Japanese people, in addition to providing them with various opportunities to learn about ICH in cooperation with Sakai City. These opportunities include permanent displays of IRCI panels at the Sakai City Museum.

In FY2021, IRCI will organise a Researchers Forum as a commemorative event of the 10th anniversary of its establishment (please refer to "3. Researchers Forum" on the left page). Following the Forum, IRCI will cooperate in a public event on ICH organised by Sakai City to further spread public understanding of the 2003 Convention.

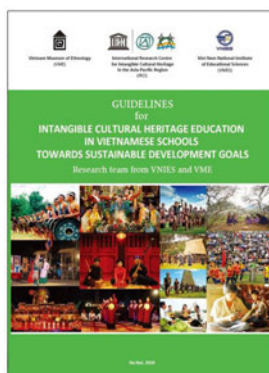


Displaying panels at Sakai City Museum

●Communications and Publicity

The FY2019 version of the IRCI Brochure, which illustrates the latest research projects with various pictures, was published in English and Japanese. It has been distributed to UNESCO headquarters, local offices, Category 2 Centres, and the National commissions for UNESCO in each country, as well as to research institutes and universities, both at home and abroad. In addition, IRCI regularly updates its mobile friendly website and frequently releases new information regarding its research activities and ICH. Further, IRCI published the following publications in FY2020 to disseminate information and the results of its activities.

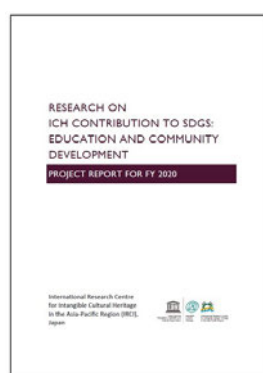
1. Guidelines for "ICH's contribution towards SDGs" project for formal education in Vietnam (English)
2. Guidelines for "ICH's contribution towards SDGs" project for non-formal education in the Philippines (Subanen)
3. Project report on "ICH's contribution towards SDGs" project (English) (PDF only)
4. Project report on "Study of Emergency Protection of ICH in Conflict-Affected Countries in Asia" (English) (PDF only)



Guidelines for "ICH's contribution towards SDGs" project for formal education in Vietnam (English)



Guidelines for "ICH's contribution towards SDGs" project for non-formal education in the Philippines (Subanen)



Project report on "ICH's contribution towards SDGs" project (English) (PDF only)



Project report on "Study of Emergency Protection of ICH in Conflict-Affected Countries in Asia" (English) (PDF only)

Brief History

Oct. 2009: Establishment of IRCI authorized at the UNESCO General Conference
 Aug. 2010: Agreement for the establishment of IRCI concluded between the Japanese Government and UNESCO
 Mar. 2011: Agreement for the opening of IRCI concluded between Sakai City and the National Institutes for Cultural Heritage
 Apr. 2011: Establishment of the preparatory office for IRCI
 Oct. 2011: Official opening of IRCI
 Dec. 2018: Agreement for the continuation of IRCI concluded between the Japanese Government and UNESCO
 Mar. 2019: Agreement for the continuation of IRCI concluded between Sakai City and the National Institutes for Cultural Heritage

Facilities

		(m ²)
Buildings	Building Area	244.67
	Gross Floor Area	244.67
Number of Rooms		4

*The Building is provided by Sakai City, Osaka Prefecture

Special Advisory Board (As of April 1, 2021, titles omitted)

We have a board of special advisors, consisting of professionals drawn from outside the institutes, to gather various opinions from many fields concerning the management of the National Institutes for Cultural Heritage. The mission of the Board of Special Advisors is to discuss important issues about the management of the Institutes and give advice to the Chairperson of the Board. The number of board members is set at 20, and each member serves renewable 2-year terms.

IKENOBO Senko: Headmaster Designate of Ikenobo

ITO Yoshiaki: President, Aichi Prefectural Ceramic Museum and Director, Machida City Museum

UEHARA Mahito: Professor Emeritus, Kyoto University

UMEMOTO Kazuyoshi: President, The Japan Foundation

GAMO Atsumi: Commissioner, The Japan Tourism Agency

KARAIKE Koji: Representative Director and Chairman of the Board, Kyushu Railway Company

KINOSHITA Naoyuki: Director, Shizuoka Prefectural Museum of Art

SATO Teiichi: Former Ambassador Extraordinary and Plenipotentiary to the UNESCO

TANABE Ikuo: Director, Buddhist Art Association

DAN Fumi: Actress

NISHITAKATSUJI Nobuyoshi: Chairman of the Board, Dazaifu Tenmangu Shrine

NISHIMURA Yasuhiko: Grand Steward, Imperial Household Agency

FUJII Joji: Professor Emeritus, Kyoto University

FURUSE Natsuko: Professor Emeritus, Ochanomizu University

HOKOI Shuichi: Professor Emeritus, Kyoto University

YANAGIHARA Masaki: President, Independent Administrative Institution National Museum of Art

External Evaluation Board (As of April 1, 2021, titles omitted)

Besides implementing self-evaluation of the Institutes' operational, survey and research performance, The National Institutes for Cultural Heritage have also established an External Evaluation Board of external experts to verify the Institutes' assessment of their own performance. (Renewable 2-year terms)

OGASAWARA Naoshi: President, Avantia GP

KOJIMA Kaoru: Department of Aesthetics and Art History, Faculty of Humanities Professor, Jissen Women's University

KOMATSU Taishu: Director, Eisei-Bunko Museum

KAWAI Masatomo: Professor Emeritus, Faculty of Letters, Keio University

SAITO Tsutomu: Professor, Research Department, National Museum of Japanese History

SAKAKIBARA Satoru: Specially Appointed Director, Okazaki City Museum

SAKAMOTO Hiroko: (Full-Time) Audit & Supervisory Board Member, The Asahi Shimbun Company

DEGAWA Tetsuro: Director, Museum of Oriental Ceramics, Osaka

TERASAKI Yasuhiro: Professor Emeritus, Nara University

TERADA Yoshitaka: Professor Emeritus, National Museum of Ethnology

NAGOYA Akira: Former Deputy Director of the Goto Museum of Art

HAMADA Hiroaki: Professor, J. F. Oberlin University

YANAGIBAYASHI Osamu: Advisor to the "Temples & Shrines Project" by the Yomiuri Shimbun (Former Member of the Editorial Writer Board, The Yomiuri Shimbun)

Budget

Fiscal Year 2021 Budget

Estimated Income

(Unit: JPY1,000)

Source	Fiscal 2021	Fiscal 2020
Self-generated Income	1,032,072	2,089,818
Government funding for operating expenses	9,051,943	8,633,262
Income from commissioned projects	796,129	636,629
Grant for facilities improvement	0	197,737
Others (Donations, etc.)	798,736	779,858
Total	11,678,880	12,337,304

Estimated Expenditure

(Unit: JPY1,000)

Purpose	Fiscal 2021	Fiscal 2020
Operational expenses	10,084,015	10,723,080
Personnel	3,809,000	3,733,205
Supply costs	6,275,015	6,989,875
Expenses for commissioned projects	796,129	636,629
Facility improvement	0	197,737
Others (Donations, etc.)	798,736	779,858
Total	11,678,880	12,337,304

Income from External Sources

	Grants-in-Aid for Scientific Research				Funding for Commissioned Work (Fiscal 2020)		Research Grants (Fiscal 2020)	
	① Fiscal 2021		② Multi-year Fund Fiscal 2021					
	Number of projects	Amount (Unit: JPY1,000)	Number of projects	Amount (Unit: JPY1,000)	Number of projects	Amount (Unit: JPY1,000)	Number of projects	Amount (Unit: JPY1,000)
National Institutes for Cultural Heritage Secretariat	0	0	0	0	1	82,310	0	0
Tokyo National Museum	8	23,920	29	23,790	7	154,489	6	93,756
Kyoto National Museum	3	15,860	4	1,105	1	3,595	0	0
Nara National Museum	1	3,120	4	520	0	0	3	9,000
Kyushu National Museum	5	23,320	6	4,290	2	149	0	0
Tokyo National Research Institute for Cultural Properties	10	27,700	17	13,000	7	107,029	4	2,652
Nara National Research Institute for Cultural Properties	25	129,727	39	43,030	29	255,873	12	10,853
International Research Centre for Intangible Cultural Heritage in the Asia-Pacific Region	0	0	0	0	2	29,109	0	0
Total	52	223,647	99	85,735	49	632,553	25	116,260

※The amount of ① is the appropriation amount as of April, 2020.

※In the case of projects that extend over multiple fiscal years, the amount given under ② shows the amount allocated to that year when the decision to provide the grant was first made.

※Please note that the figures given include indirect expenses.

※Funding for commissioned work excludes commissions from the National Institutes for Cultural Heritage.

○Financial Donations and Cultural Property Donations

[Financial Donations]

Independent Administrative Institutions are mainly administered through national grants for operational costs and facilities improvement. However, difficult financial conditions and the streamlining of operations makes it necessary to receive outside funds as well. The National Institutes for Cultural Heritage is no exception and we also need to secure other funding sources besides income from admission fees. For these reasons, we welcome financial support from a wide range of organizations and individuals.

The National Institutes for Cultural Heritage has been designated by the National Tax Agency as a Special Public-Interest Promotion Corporation. This means that donations to our institutions (by organizations or individuals) are eligible for more generous income and corporate tax deductions than donations to regular private entities.

▶Income tax

Individuals who donate to a Special Public-Interest Promotion Corporation are eligible for a partial income tax deduction through the "Donation Deduction" system.

As a result, a donor will be able to deduct a donation amount of up to 40% of total income (minus 2,000 yen) when calculating income tax.

*Please note that tax deductions for donations may also be available with respect to individual Resident Tax, depending on the regulations adopted by the local authority for the area where the individual taxpayer is officially resident.

▶Corporate tax

When donating to a Special Public-Interest Promotion Corporation, corporate entities can count the donation amount as a deductible expense separate from other general donations. As a result, the maximum amount of donations that can be counted as special deductible expenses = (amount of capital × 0.375 (formerly 0.25) + 6.25% of income (formerly 5%)) × 1/2 (where the business year covers a period of less than one full calendar year, the calculation must be performed on a pro-rata basis according to a specified number of months. Also, please note that the calculation formula is different in the case of corporations that do not have capital stock (such as NPOs)).

[Cultural Property Donations]

The National Institutes for Cultural Heritage is engaged in the preservation, management, research and display of cultural properties. In addition to purchasing these cultural properties systematically, we also accept donations from individuals or organizations.

For further information about donations, please contact the following departments:

Institution	Financial Donations	Cultural Property Donations	Phone Numbers
Tokyo National Museum	Accounting, Administration Department	Collections Management, Curatorial Research Department	03-3822-1111
Kyoto National Museum	Department of Finance	Department of Registration and Image Services	075-541-1151
Nara National Museum	Accounts	Curatorial Division, Planning Section	0742-22-7772 0742-22-7774
Kyushu National Museum	Financial Affairs, General Affairs Division	Collection Registration, Cultural Properties Division	092-918-2807
Tokyo National Research Institute for Cultural Properties	Department of Research Support and Promotion, Planning Section		03-3823-2249
Nara National Research Institute for Cultural Properties	Department of Research Support and Promotion, Administration Division		0742-30-3916
International Research Centre for Intangible Cultural Heritage in the Asia-Pacific Region (IRC)	General Affairs Section		072-275-8050

The "National Institutes for Cultural Heritage Donation Portal Site" has opened.

The "National Institutes for Cultural Heritage Donation Portal Site" introduces the donation and membership systems for our National Museums and National Research Institute for Cultural Properties

○Membership

Tokyo National Museum, Nara National Museum and Kyushu National Museum are supported by the Supporting Member System, while Kyoto National Museum is supported by the Seifukai Association.

To encourage people to visit our museums more frequently, Tokyo National Museum, Kyoto National Museum, Nara National Museum and Kyushu National Museum have all established their own membership systems. In addition, to mark the 10th anniversary of the establishment of the National Institutions for Cultural Heritage, a new "National Museums Members Pass" system was established in 2017, which applies to all four National Museums.

We welcome new members at any time of the year.

		Tokyo National Museum	Kyoto National Museum	Nara National Museum	Kyushu National Museum
Name		National Museums Members Pass			
Annual Membership Fee	Regular	2,500 Yen (tax included)			
	Student	1,200 Yen (tax included)			
Special Privileges	Permanent Exhibitions	Tokyo National Museum: Regular Exhibitions Kyoto National Museum: Collection Galleries Nara National Museum: Exhibition from the Permanent Collection Kyushu National Museum: Cultural Exchange Exhibition <ul style="list-style-type: none"> On showing your Members Pass, you can view any of these permanent collection exhibitions an unlimited number of times (this applies only to the person in whose name the Members Pass is registered) 			
	Others	Special Exhibitions at Kyoto National Museum, Nara National Museum and Kyushu National Museum can be viewed an unlimited number of times at the group ticket price (only when group discounts are available) <ul style="list-style-type: none"> On showing your Members Pass at a National Museum ticket office, you can purchase a special exhibition ticket at the group ticket price (this applies only to the person in whose name the Members Pass is registered) Students can purchase a special exhibition ticket at the student price, which is the same as the group ticket price (this applies only to the person in whose name the Members Pass is registered) 			
How to Apply		You can apply for a Members Pass at one of the National Museum ticket offices, or by post using postal remittance.			
For More Information		Business Development Administration Dept. 03-3822-1111	Administrative Division 075-541-1151	General Affairs Division Planning Officer 0742-22-4450	General Affairs Division 092-918-2807



○Campus Members System

Each of the four National Museums has its own membership programs for universities and colleges. These programs are aimed at deepening cooperation with institutions of higher education and providing opportunities for their students to become familiar with the National Museums. Members can enjoy various privileges, including free admission to regular exhibitions, for a yearly membership fee corresponding to the number of students.

○Venue Rental

Each of the National Museums makes its facilities available as unique venues for MICE (Meetings, Incentives, Conferences and Exhibitions) events. From corporate parties to international conventions, the museum facilities can be used for a wide range of activities.

○Diversifying Visitor Experiences

The national museums hold various events aimed at expanding the opportunities to appreciate art. Efforts are being taken to facilitate understanding for foreign tourists, such as adding multilingual information labels and audio guides at exhibition galleries, namely in English, Chinese and Korean.



art Kyoto 2020 (Kyoto National Museum)



Visitor tours for visually-impaired people (Kyushu National Museum)



Access:

JR Line: 10 min. from Ueno or Uguisudani Station

Ginza or Hibiya Tokyo Metro Line: 15 min. from Ueno Station

Chiyoda Tokyo Metro Line: 15 min. from Nezu Station

Keisei Line: 15 min. from Keisei Ueno Station



**National Institutes for
Cultural Heritage**

13-9 Ueno Park, Taito-ku, Tokyo, 110-8712
Phone: +81-3-3822-1196

URL: <https://www.nich.go.jp/>