

Directors (As of April 1, 2019)

MATSUMURA Keiji: President (and Executive Director of the Nara National Research Institute for Cultural Properties)

SUGINO Tsuyoshi: Director

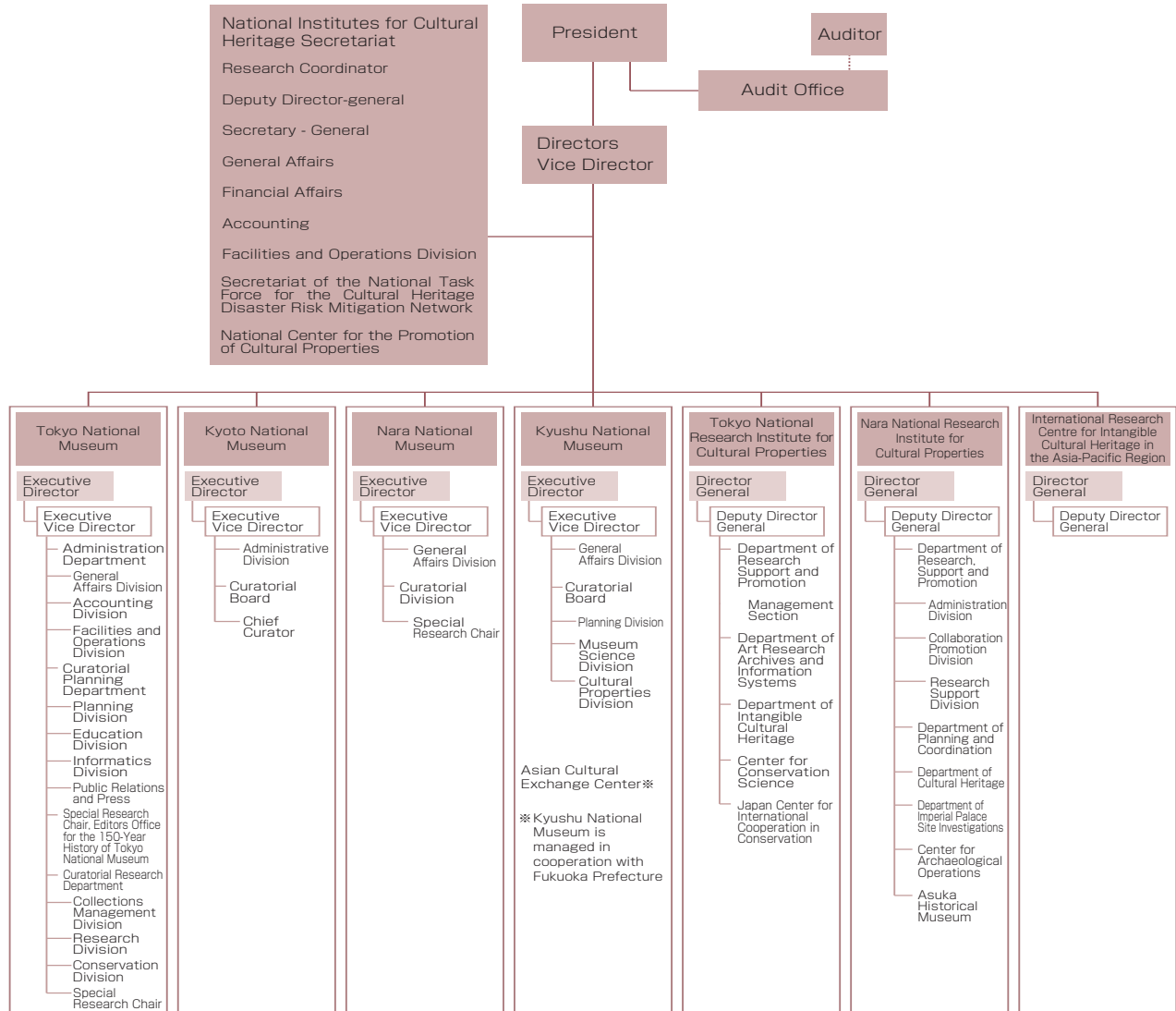
SHIMATANI Hiroyuki: Director (and Executive Director, Kyusyu National Museum)

HAYASHIDA Suma: Director

KURUSHIMA Noriko: Auditor

NAKAMOTO Fuminori: Auditor

Organizational Chart



Number of Staff

Division	Total staff	Administrative staff	Technical and security staff	Specialists	Curators/ Researchers
Total	378	144	19	13	202
National Institutes for Cultural Heritage Secretariat	26	25	0	0	1
National Center for the Promotion of Cultural Properties	24	7	0	4	13
Tokyo National Museum	104	34	11	8	51
Kyoto National Museum	41	20	5	0	15
Nara National Museum	32	15	3	0	14
Kyushu National Museum	26	10	0	0	16
Tokyo National Research Institute for Cultural Properties	43	8	0	0	35
Nara National Research Institute for Cultural Properties	79	24	0	1	54
International Research Centre for Intangible Cultural Heritage in the Asia-Pacific Region	4	3	0	0	1

(As of April 1, 2019)