

Directors (AS OF APRIL 1, 2015)

SASAKI Johei: President (Executive Director, Kyoto National Museum)
 MATSUMURA Keiji: Director (Executive Director, Nara National
 Research Institute for Cultural Prop)
 IKEHARA Mitsuhiro: Director

WATANABE Taeko: Director
 KURUSIMA Noriko: Auditor
 NAKAMOTO Fuminori: Auditor

Special Advisory Board (AS OF APRIL 1, 2015)

We have a board of special advisors, consisting of professionals drawn from outside the institutes, to gather various opinions from many fields concerning the management of the National Institutes for Cultural Heritage. The mission of the Board of Special Advisors is to discuss important issues about the management of the Institutes and give advice to the Chairperson of the Board. The number of board members is set at 20, and each member serves renewable 2-year terms. Usually, the board holds two meetings per year.

ANDO Hiroyasu: President, Japan Foundation
 ISHIZAWA Yoshiaki: Director of Sophia Asia Center for Research
 and Human Development
 IMAMURA Mineo: Professor Emeritus, National Museum of
 Japanese History
 KAZAOKA Noriyuki: Grand Steward, Imperial Household Agency
 KAMII Monsho: Head Priest, Byodoin Temple
 KARAIKE Koji: Representative Director and Chairman of the Board,
 Kyushu Railway Company
 SATO Sojun: Professor Emeritus, Nara Women's University
 SATO Teiich: Professor, Graduate School, International University
 of Health and Welfare

SHIMIZU Mazumi: Executive Director Mitsui Memorial Museum
 SHIRAIISHI Taichiro: Executive Director, Osaka Prefecture Chikatsu
 Asuka Museum
 TANABE Ikuo: President, Osaka Center of Cultural Heritage
 DAN Fumi: Actress
 NISHIDA Atsutoshi: Counselor, Toshiba Corp.
 HAYASHIDA Suma: Executive Director, Onojo Madokapia Hall
 FUJII Jouji: Executive Director, Ishikawa Prefectural Museum of
 History
 MABUCHI Akiko: President, Independent Administrative Institution
 National Museum of Art

External Evaluation Board (AS OF APRIL 1, 2015)

Besides implementing self-evaluation of the Institutes' operational, survey and research performance, The National Institutes for Cultural Heritage have also established an External Evaluation Board of external experts to verify the Institutes' assessment of their own performance. (Renewable 2-year terms)

KOBAYASHI Tadashi: Professor Emeritus, Gakushuin University;
 Executive Director, OKADA MUSEUM OF
 ART (Chairperson)
 YOKOSATO Koichi: Special chief, NHK Promotions Inc. (Vice-Chair-
 person)
 AYUKAWA Masaaki: Certified Public Accountant
 INADA Takashi: Professor Emeritus, Okayama University
 OKADA Yasuyoshi: Professor, Institute for Cultural Studies of
 Ancient Iraq, Kokushikan University
 KAWAI Masatomo: Professor Emeritus, Keio University; Executive
 Director, Chiba City Museum of Art

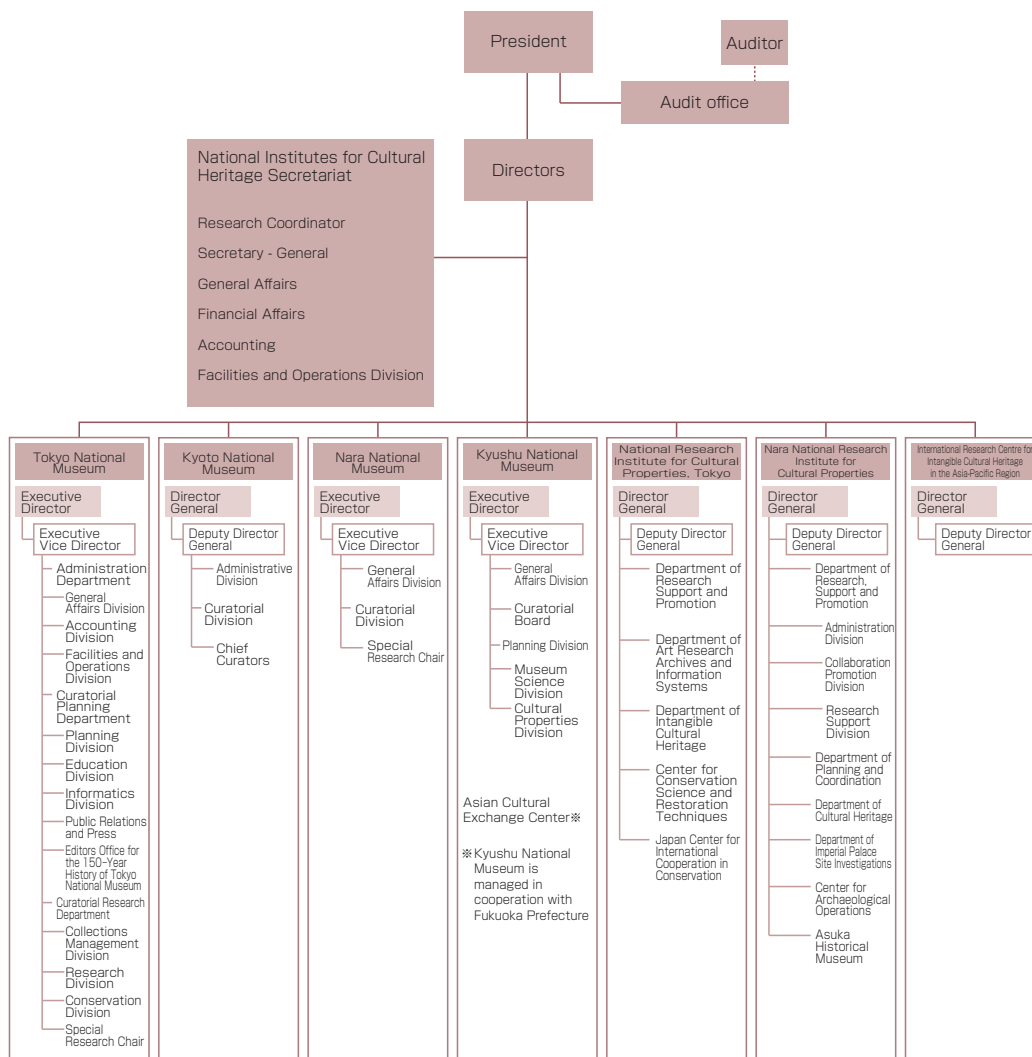
SAKAI Tadayasu: Executive Director, Setagaya Art Museum
 SATO Makoto: Professor, Graduate School of Humanities and Soci-
 ology, University of Tokyo
 TAMAMUSHI Satoko: Professor, College of Art and Design,
 Musashino Art University
 HAMADA Hiroaki: Professor, J. F. Oberlin University
 FUJITA Haruhiko: Professor, Graduate School of Letters, Osaka
 University
 MORI Hiroko: Committee Member, Fukuoka Prefecture Council for
 the Protection of Cultural Properties
 YANAGIBAYASHI Osamu: Reporter, The Yomiuri Shimbun Osaka

Number of Staff

Division	Number of staff	Administrative staff	Technical and security staff	Curators/ Researchers
Total	325	125	19	181
National Institutes for Cultural Heritage Secretariat	18	18	0	0
Tokyo National Museum	93	34	11	48
Kyoto National Museum	35	18	4	13
Nara National Museum	33	15	4	14
Kyushu National Museum	27	10	0	17
National Research Institute for Cultural Properties, Tokyo	41	7	0	34
Nara National Research Institute for Cultural Properties	76	22	0	54
International Research Centre for Intangible Cultural Heritage in the Asia-Pacific Region	2	1	0	1

(Figures as of April 1, 2015)

Organizational Chart



(As of April 1, 2015)

Budget

Fiscal 2015 Budget

Revenue

(Unit: JPY1,000)

Source	Fiscal 2015	Fiscal 2014
Self-generated Income	1,322,634	1,322,634
Government funding for operating expenses	8,440,731	8,238,870
Income from commissioned projects	26,000	26,000
Grant for facilities improvement	2,920,551	2,990,365
Total	12,709,916	12,577,869

Expenditure

(Unit: JPY1,000)

Purpose	Fiscal 2015	Fiscal 2014
Operational expenses	9,763,365	9,561,504
Personnel	3,249,769	3,100,606
Supply costs	6,513,596	6,460,898
Expenses for commissioned projects	26,000	26,000
Facility improvement	2,920,551	2,990,365
Total	12,709,916	12,577,869

Income from External Sources

	Grants-in-Aid for Scientific Research (2015)				Funding for Commissioned Work (Fiscal 2014)		Research Grants (Fiscal 2014)	
	① Fiscal 2015		② Multi-year Fund Fiscal 2015		Number of projects	Amount (Unit: JPY1,000)	Number of projects	Amount (Unit: JPY1,000)
	Number of projects	Amount (Unit: JPY1,000)	Number of projects	Amount (Unit: JPY1,000)				
National Institutes for Cultural Heritage Secretariat	0	0	0 (0)	0	0	0	1	184,653
Tokyo National Museum	17	56,110	19 (10)	22,230	1	15,220	6	18,351
Kyoto National Museum	1	9,100	2 (0)	1,830	0	0	3	19,751
Nara National Museum	1	7,540	2 (0)	2,990	0	0	5	10,500
Kyushu National Museum	3	11,050	7 (2)	9,390	2	14,496	0	0
National Research Institute for Cultural Properties, Tokyo	9	43,620	15 (3)	22,360	21	228,738	4	1,900
Nara National Research Institute for Cultural Properties	20	47,104	35 (8)	37,830	43	230,498	3	3,500
International Research Centre for Intangible Cultural Heritage in the Asia-Pacific Region	0	0	0 (0)	0	1	51,388	1	8,300
Total	51	174,524	80 (23)	96,630	68	540,340	23	246,955

※The amount of ① is the appropriation amount as of April, 2015.

※In the case of projects that extend over multiple fiscal years, the amount given under ② shows the amount allocated to that year when the decision to provide the grant was first made.

※With regard to research topics for which both ① and ② were awarded (partial funding), the number of projects is included under the respective totals for ① and ②; the figure given in parentheses for ② is the number of projects for which both types of Grants-in-Aid were awarded. Please note that the figures given include indirect expenses.

※Funding for commissioned work excludes commissions from the National Institutes for Cultural Heritage.

Information about Donation and Membership

○Financial Donations and Cultural Property Donations

[Financial Donations]

Independent Administrative Institutions are mainly administered through national grants for operational costs and facilities improvement. However, difficult financial conditions and the streamlining of operations makes it necessary to receive outside funds as well. The National Institutes for Cultural Heritage is no exception and we also need to secure other funding sources besides income from admission fees. For these reasons, we welcome financial support from a wide range of organizations and individuals.

The National Institutes for Cultural Heritage has been designated by the National Tax Agency as a Special Public-Interest Promotion Corporation. This means that donations to our institutions (by organizations or individuals) are eligible for more generous income and corporate tax deductions than donations to regular private entities.

▶Income tax

When donating to a Special Public-Interest Promotion Corporation, individuals can deduct part of this donation from their taxable income. A FY2010 amendment to the tax law reduced the minimum annual tax-deductible donation amount from 5,000 yen to 2,000 yen, so any individual who donates more than 2,000 yen annually to Special Public-Interest Promotion Corporations will be eligible for a tax deduction. As a result, a donor will be able to deduct a donation amount of up to 40% of total income (minus 2,000 yen) when calculating income tax.

▶Corporate tax

When donating to a Special Public-Interest Promotion Corporation, corporate entities can count the donation amount as a deductible expense separate from other general donations. Furthermore, the reform of the tax system in December 2011 raised the ceiling for the amount of donations that could be included as deductible expenses. As a result, the maximum amount of donations that can be counted as special deductible expenses = (amount of capital × 0.375 (formerly 0.25) + 6.25% of income (formerly 5%)) × 1/2

[Cultural Property Donations]

The National Institutes for Cultural Heritage is engaged in the preservation, management, research and display of cultural properties. In addition to purchasing these cultural properties systematically, we also accept donations from individuals or organizations.

For further information about donations, please contact the following departments:

Institution	Section	Cultural Property Donations	Phone Numbers
Tokyo National Museum	Accounting, Administration Department	Collections Management, Curatorial Research Department	03-3822-1111
Kyoto National Museum	Financial Affairs	Department of Registration and Image Archives	075-541-1151
Nara National Museum	Accounts	Department of Exhibition and Education	0742-22-7772 0742-22-7774
Kyushu National Museum	Financial Affairs, General Affairs Division	Collection Registration, Cultural Properties Division	092-918-2807
National Research Institute for Cultural Properties, Tokyo	Department of Research Support and Promotion, Planning Section		03-3823-2249
Nara National Research Institute for Cultural Properties	Department of Research Support and Promotion, Administration Division		0742-30-6732
Inquiries not specifying institutions	National Institutes for Cultural Heritage Secretariat, Financial Affairs		03-3822-2439

○Membership

Tokyo National Museum and Nara National Museum are supported by the Supporting Member system, while Kyoto National Museum is supported by the Seifukai Association. We also offer "Friends of the Museum" and "Museum Passport" systems to encourage people to visit our museums more frequently. We welcome new members at any time of the year.

[Campus Members System]

Each of the four National Museums has its own membership programs for universities and colleges. These programs are aimed at deepening cooperation with institutions of higher education and providing opportunities for their students to become familiar with the National Museums. Members can enjoy various privileges, including free admission to regular exhibitions, for a yearly membership fee corresponding to the number of students.



○Venue Rental

Each of the National Museums makes its facilities available as unique venues for MICE (Meetings, Incentives, Conferences and Exhibitions) events. From corporate parties to international conventions, the museum facilities can be used for a wide range of activities.



Gala dinner party held at Heiseikan (Tokyo National Museum)



Jewelry show and dinner held at the Kyoto National Museum (Heisei Chishinkan Wing)