

**Directors** (AS OF APRIL 1, 2017, titles omitted)

MATSUMURA Keiji: President (and Executive Director of the Nara National Research Institute for Cultural Properties)  
 IKEHARA Mitsuhiro: Director

HAYASHIDA Suma: Director (Outside)  
 KURUSHIMA Noriko: Auditor (Outside)  
 NAKAMOTO Fuminori: Auditor (Outside)

**Special Advisory Board** (AS OF APRIL 1, 2017, titles omitted)

We have a board of special advisors, consisting of professionals drawn from outside the institutes, to gather various opinions from many fields concerning the management of the National Institutes for Cultural Heritage. The mission of the Board of Special Advisors is to discuss important issues about the management of the Institutes and give advice to the Chairperson of the Board. The number of board members is set at 20, and each member serves renewable 2-year terms.

ANDO Hiroyasu: President, Japan Foundation  
 IMAMURA Mineo: Professor Emeritus, National Museum of Japanese History; Emeritus Professor, The Graduate University for Advanced Studies  
 UEHARA Mahito: Executive Director, Tatsuuma Archeological Museum  
 KAMII Monsho: Head Priest, Byodoin Temple  
 KARAIKE Koji: Representative Director and Chairman of the Board, Kyushu Railway Company  
 KINOSHITA Naoyuki: Professor, Graduate School of Humanities and Sociology, University of Tokyo  
 SATO Teiichi: Former Permanent Delegate of Japan to UNESCO  
 SHIMIZU Mazumi: Executive Director, Mitsui Memorial Museum

TANABE Ikuo: President, Osaka Center for Cultural Heritage  
 DAN Fumi: Actress  
 NISHITAKATSUJI Nobuyoshi: Head Priest, Dazaifu Tenman-gu Shrine  
 FUJII Joji: Professor Emeritus, Kyoto University  
 FURUSE Natsuko: Professor, Faculty of Core Research Humanities Division, Ochanomizu University  
 YANAGIHARA Masaki: President, Independent Administrative Institution National Museum of Art  
 YAMAMOTO Shinichiro: Grand Steward, Imperial Household Agency

**External Evaluation Board** (AS OF APRIL 1, 2017, titles omitted)

Besides implementing self-evaluation of the Institutes' operational, survey and research performance, the National Institutes for Cultural Heritage have also established an External Evaluation Board of external experts to verify the Institutes' assessment of their own performance. (Renewable 2-year terms)

KOBAYASHI Tadashi: Professor Emeritus, Gakushuin University; (Chairperson) Executive Director, OKADA MUSEUM OF ART  
 KAWAI Masatomo: Professor Emeritus, Keio University; Executive (Vice-Chairperson) Director, Chiba City Museum of Art  
 AYUKAWA Masaaki: Certified Public Accountant  
 ISHIKAWA Hideshi: Professor, School of Arts and Letters, Meiji University  
 OKADA Yasuyoshi: Professor, Institute for Cultural Studies of Ancient Iraq, Kokushikan University  
 SAITO Tsutomu: Professor, Research Department, National Museum of Japanese History  
 SAKAKIBARA Satoru: Director, Okazaki City Museum

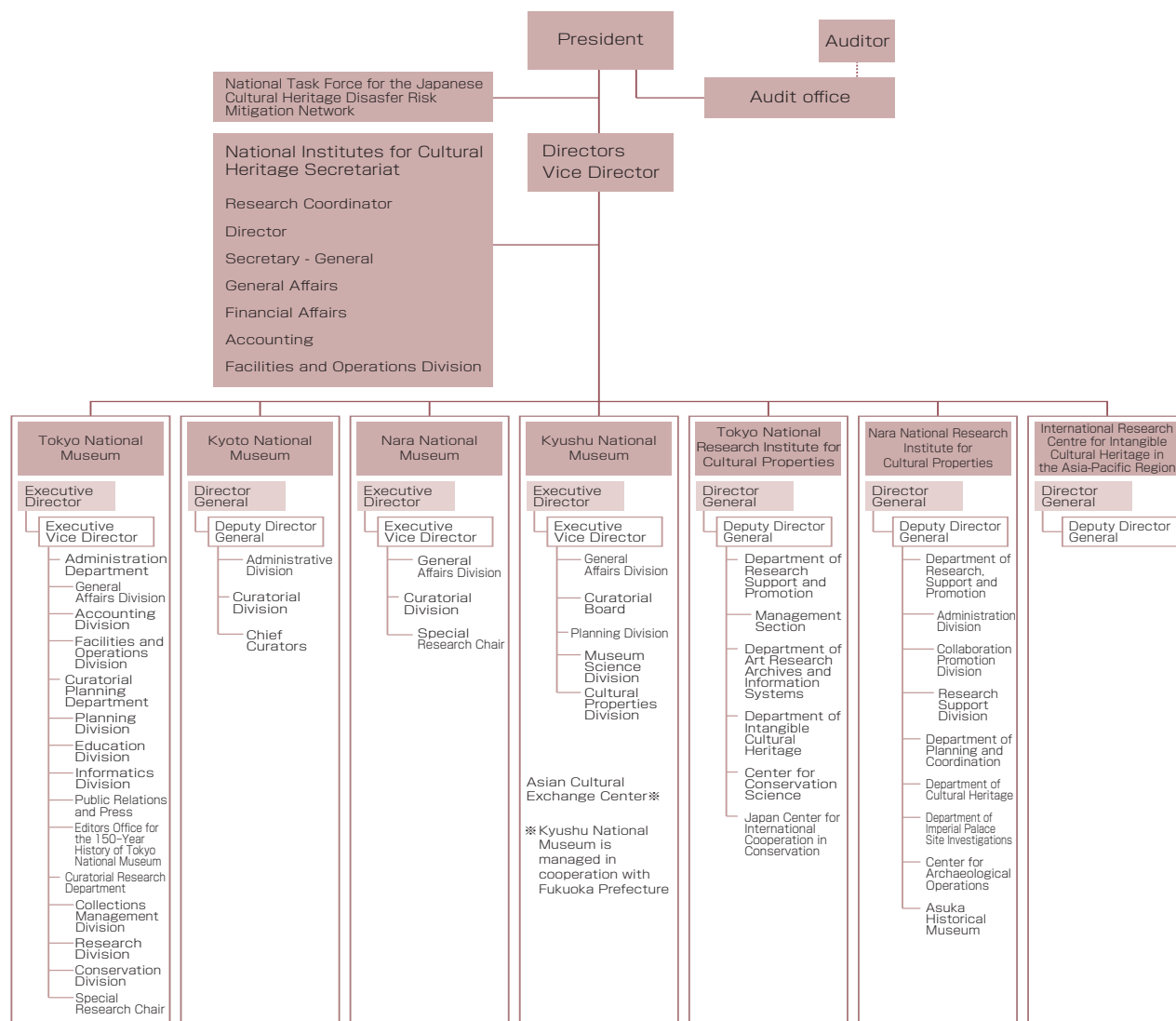
SAKAMOTO Hiroko: Executive Director (Cultural Projects and Business Development) of the Asahi Shimbun Company, Representative of the Nagoya Main Branch  
 SATO Makoto: Professor, Graduate School of Humanities and Sociology, University of Tokyo  
 TAMAMUSHI Satoko: Professor, College of Art and Design, Musashino Art University  
 NAGOYA Akira: Vice Director, The Gotoh Museum  
 HAMADA Hiroaki: Professor, J. F. Oberlin University  
 FUJITA Haruhiko: Professor Emeritus, Osaka University  
 YANAGIBAYASHI Osamu: Former Member of the Editorial Board, The Yomiuri Shimbun

**Number of Staff**

Division	Number of staff	Administrative staff	Technical and security staff	Specialists	Curators/ Researchers
Total	337	129	20	3	185
National Institutes for Cultural Heritage Secretariat	23	22	0	0	1
Tokyo National Museum	98	34	12	2	50
Kyoto National Museum	37	18	4	0	15
Nara National Museum	33	15	4	0	14
Kyushu National Museum	26	8	0	0	18
Tokyo National Research Institute for Cultural Properties	41	7	0	0	34
Nara National Research Institute for Cultural Properties	76	23	0	1	52
International Research Centre for Intangible Cultural Heritage in the Asia-Pacific Region	3	2	0	0	1

(Figures as of April 1, 2017)

## Organizational Chart (As of April 1, 2017)



## Budget

### Fiscal 2017 Budget

#### Revenue

(Unit: JPY1,000)

Source	Fiscal 2017	Fiscal 2016
Self-generated Income	1,575,706	1,474,731
Government funding for operating expenses	8,325,430	8,387,941
Income from commissioned projects	587,444	576,849
Grant for facilities improvement	1,779,609	1,334,381
Others (Donations, etc.)	439,574	350,531
<b>Total</b>	<b>12,707,763</b>	<b>12,124,433</b>

#### Expenditure

(Unit: JPY1,000)

Purpose	Fiscal 2017	Fiscal 2016
Operational expenses	9,901,136	9,862,672
Personnel	3,448,128	3,472,102
Supply costs	6,453,008	6,390,570
Expenses for commissioned projects	587,444	576,849
Facility improvement	1,779,609	1,334,381
Others (Donations, etc.)	439,574	350,531
<b>Total</b>	<b>12,707,763</b>	<b>12,124,433</b>

## Income from External Sources

	Grants-in-Aid for Scientific Research (2017)				Funding for Commissioned Work (Fiscal 2016)		Research Grants (Fiscal 2016)	
	① Fiscal 2017		② Multi-year Fund Fiscal 2017		Number of projects	Amount (Unit: JPY1,000)	Number of projects	Amount (Unit: JPY1,000)
	Number of projects	Amount (Unit: JPY1,000)	Number of projects	Amount (Unit: JPY1,000)				
National Institutes for Cultural Heritage Secretariat	0	0	0 (0)	0	1	29,227	1	186,000
Tokyo National Museum	12	51,690	8 (1)	11,180	3	47,854	3	28,112
Kyoto National Museum	2	9,230	6 (0)	5,590	0	0	1	3,810
Nara National Museum	1	2,470	4 (1)	6,370	0	0	5	10,100
Kyushu National Museum	4	16,380	4 (0)	4,160	3	26,825	0	0
Tokyo National Research Institute for Cultural Properties	10	28,610	14 (2)	17,550	12	158,107	3	5,125
Nara National Research Institute for Cultural Properties	17	92,010	42 (5)	43,680	41	345,648	10	6,680
International Research Centre for Intangible Cultural Heritage in the Asia-Pacific Region	0	0	0 (0)	0	1	51,380	1	5,000
<b>Total</b>	<b>46</b>	<b>200,390</b>	<b>78 (9)</b>	<b>88,530</b>	<b>61</b>	<b>659,041</b>	<b>24</b>	<b>244,827</b>

※The amount of ① is the appropriation amount as of April, 2017.

※In the case of projects that extend over multiple fiscal years, the amount given under ② shows the amount allocated to that year when the decision to provide the grant was first made.

※With regard to research topics for which both ① and ② were awarded (partial funding), the number of projects is included under the respective totals for ① and ②; the figure given in parentheses for ② is the number of projects for which both types of Grants-in-Aid were awarded. Please note that the figures given include indirect expenses.

※Funding for commissioned work excludes commissions from the National Institutes for Cultural Heritage.

## Information about Donation and Membership

### ○Financial Donations and Cultural Property Donations

#### [Financial Donations]

Independent Administrative Institutions are mainly administered through national grants for operational costs and facilities improvement. However, difficult financial conditions and the streamlining of operations makes it necessary to receive outside funds as well. The National Institutes for Cultural Heritage is no exception and we also need to secure other funding sources besides income from admission fees. For these reasons, we welcome financial support from a wide range of organizations and individuals.

The National Institutes for Cultural Heritage has been designated by the National Tax Agency as a Special Public-Interest Promotion Corporation. This means that donations to our institutions (by organizations or individuals) are eligible for more generous income and corporate tax deductions than donations to regular private entities.

#### ▶Income tax

When donating to a Special Public-Interest Promotion Corporation, individuals can deduct part of this donation from their taxable income, using either the "Donation Deduction" system or the "Tax Credit" system, whichever is more beneficial to that particular individual.

A FY2010 amendment to the tax law reduced the minimum annual tax-deductible donation amount from 5,000 yen to 2,000 yen, so any individual who donates more than 2,000 yen annually to Special Public-Interest Promotion Corporations will be eligible for a tax deduction. As a result, a donor will be able to deduct a donation amount of up to 40% of total income (minus 2,000 yen) when calculating income tax.

\*Please note that tax deductions for donations may also be available with respect to individual Resident Tax, depending on the regulations adopted by the local authority for the area where the individual taxpayer is officially resident.

#### ▶Corporate tax

When donating to a Special Public-Interest Promotion Corporation, corporate entities can count the donation amount as a deductible expense separate from other general donations. Furthermore, the reform of the tax system in December 2011 raised the ceiling for the amount of donations that could be included as deductible expenses. As a result, the maximum amount of donations that can be counted as special deductible expenses = (amount of capital × 0.375 (formerly 0.25) + 6.25% of income (formerly 5%)) × 1/2 (Where the business year covers a period of less than one full calendar year, the calculation must be performed on a pro-rata basis according to a specified number of months. Also, please note that the calculation formula is different in the case of corporations that do not have capital stock (such as NPOs, etc.)

#### [Cultural Property Donations]

The National Institutes for Cultural Heritage is engaged in the preservation, management, research and display of cultural properties. In addition to purchasing these cultural properties systematically, we also accept donations from individuals or organizations.

For further information about donations, please contact the following departments:

Institution	Financial Donations	Cultural Property Donations	Phone Numbers
Tokyo National Museum	Accounting, Administration Department	Collections Management, Curatorial Research Department	03-3822-1111
Kyoto National Museum	Financial Affairs	Department of Registration and Image Archives	075-541-1151
Nara National Museum	Accounts	Department of Exhibition and Education	0742-22-7772 0742-22-7774
Kyushu National Museum	Financial Affairs, General Affairs Division	Collection Registration, Cultural Properties Division	092-918-2807
Tokyo National Research Institute for Cultural Properties	Department of Research Support and Promotion, Planning Section		03-3823-2249
Nara National Research Institute for Cultural Properties	Department of Research Support and Promotion, Administration Division		0742-30-3916
International Research Centre for Intangible Cultural Heritage in the Asia-Pacific Region (IRCI)	General Affairs Section		072-275-8050
Inquiries not specifying institutions	National Institutes for Cultural Heritage Secretariat, Financial Affairs		03-3822-2439

## ○Membership

Tokyo National Museum and Nara National Museum are supported by the Supporting Member system, while Kyoto National Museum is supported by the Seifukai Association.

To encourage people to visit our museums more frequently, Tokyo National Museum, Kyoto National Museum, Nara National Museum and Kyushu National Museum have all established their own membership systems. In addition, to mark the 10th anniversary of the establishment of the National Institutes for Cultural Heritage, a new "National Museums Members Pass" system has been established, which applies to all four National Museums. We welcome new members at any time of the year.

		Tokyo National Museum	Kyoto National Museum	Nara National Museum	Kyushu National Museum
Name		<b>National Museum Members Pass</b>			
Annual Membership Fee	Regular	2,000 Yen (tax included)			
	Student	1,000 Yen (tax included)			
Special Privileges	Permanent Exhibitions	<b>Tokyo National Museum: Regular Exhibitions</b> <b>Kyoto National Museum: Collection Galleries</b> <b>Nara National Museum: Exhibition from the Permanent Collection</b> <b>Kyushu National Museum: Cultural Exchange Exhibition</b> <ul style="list-style-type: none"> <li>On showing your Members Pass, you can view any of these permanent exhibitions an unlimited number of times (this applies only to the person in whose name the Members Pass is registered)</li> </ul>			
	Special Exhibitions	<b>Members Pass holders can view special exhibitions held at any of the four National Museums an unlimited number of times at a specially discounted ticket price.</b> <ul style="list-style-type: none"> <li>On showing your Members Pass at a National Museum ticket office, you can purchase a special exhibition ticket at the group ticket price (this applies only to the person in whose name the Members Pass is registered)</li> <li>Students can purchase a special exhibition ticket at the student price, which is the same as the group ticket price (this applies only to the person in whose name the Members Pass is registered)</li> </ul>			
How to Apply		You can apply for a Members Pass at one of the National Museum ticket offices, or by post, using postal remittance.			
For More Information		General Affairs Section Membership System Manager 03-3822-1111	General Affairs Section Business Promotion Officer 075-531-7504	General Affairs Section Planning Officer 0742-22-4450	General Affairs Section 092-918-2807

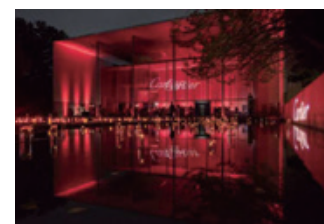


## Campus Members System

Each of the four National Museums has its own membership programs for universities and colleges. These programs are aimed at deepening cooperation with institutions of higher education and providing opportunities for their students to become familiar with the National Museums. Members can enjoy various privileges, including free admission to regular exhibitions, for a yearly membership fee corresponding to the number of students.

## ○Venue Rental

Each of the National Museums makes its facilities available as unique venues for MICE (Meetings, Incentives, Conferences and Exhibitions) events. From corporate parties to international conventions, the museum facilities can be used for a wide range of activities.



Cartier Magicien event (FY2016)  
At Tokyo National Museum

## ○Diversifying Visitor Experiences

To diversify visitor experiences, opening hours at the national museums are extended on Fridays and Saturdays, and various nighttime events are held. Efforts are being taken to facilitate understanding for foreign tourists, such as adding multilingual information labels and audio guides at exhibition galleries, namely in English, Chinese and Korean.



Flyer to promote extended hours at Kyushu National Museum



Nighttime event at Tokyo National Museum: Open Cinema Viewing (July 16, 2016)



Multilingual information label at Nara National Museum