

**Directors** (AS OF APRIL 1, 2016)

SASAKI Johei: President (Executive Director, Kyoto National Museum)  
 MATSUMURA Keiji: Director (Executive Director, Nara National  
 Research Institute for Cultural Properties)  
 IKEHARA Mitsuhiro: Director

WATANABE Taeko: Director  
 KURUSIMA Noriko: Auditor  
 NAKAMOTO Fuminori: Auditor

**Special Advisory Board** (AS OF APRIL 1, 2016)

We have a board of special advisors, consisting of professionals drawn from outside the institutes, to gather various opinions from many fields concerning the management of the National Institutes for Cultural Heritage. The mission of the Board of Special Advisors is to discuss important issues about the management of the Institutes and give advice to the Chairperson of the Board. The number of board members is set at 20, and each member serves renewable 2-year terms.

ANDO Hiroyasu: President, Japan Foundation  
 ISHIZAWA Yoshiaki: Director of Sophia Asia Center for Research  
 and Human Development  
 IMAMURA Mineo: Professor Emeritus, National Museum of  
 Japanese History; Emeritus Professor, The  
 Graduate University for Advanced Studies  
 KAZAOKA Noriyuki: Grand Steward, Imperial Household Agency  
 KAMII Monsho: Head Priest, Byodoin Temple  
 KARAIKE Koji: Representative Director and Chairman of the Board,  
 Kyushu Railway Company  
 SATO Sojun: Professor Emeritus, Nara Women's University  
 SATO Teiichi: Professor, Graduate School, International University  
 of Health and Welfare

SHIMIZU Mazumi: Executive Director, Mitsui Memorial Museum  
 SHIRAIISHI Taichiro: Executive Director, Osaka Prefecture Chikatsu  
 Asuka Museum  
 TANABE Ikuo: President, Osaka Center of Cultural Heritage  
 DAN Fumi: Actress  
 HAYASHIDA Suma: Executive Director, Onojo Madokapia Hall  
 FUJII Jouji: Executive Director, Ishikawa Prefectural Museum of  
 History  
 MABUCHI Akiko: President, Independent Administrative Institution  
 National Museum of Art

**External Evaluation Board** (AS OF APRIL 1, 2016)

Besides implementing self-evaluation of the Institutes' operational, survey and research performance, The National Institutes for Cultural Heritage have also established an External Evaluation Board of external experts to verify the Institutes' assessment of their own performance. (Renewable 2-year terms)

KOBAYASHI Tadashi: Professor Emeritus, Gakushuin University;  
 Executive Director, OKADA MUSEUM OF  
 ART (Chairperson)  
 KAWAI Masatomo: Professor Emeritus, Keio University; Execu-  
 tive Director, Chiba City Museum of Art (Vice-  
 Chairperson)  
 AYUKAWA Masaaki: Certified Public Accountant  
 ISHIKAWA Hideshi: Professor, School of Arts and Letters, Dean of  
 the Undergraduate School of Arts and Letters,  
 Meiji University  
 OKADA Yasuyoshi: Professor, Institute for Cultural Studies of  
 Ancient Iraq, Kokushikan University  
 SAITO Tsutomu: Professor, Research Department, National Mu-  
 seum of Japanese History

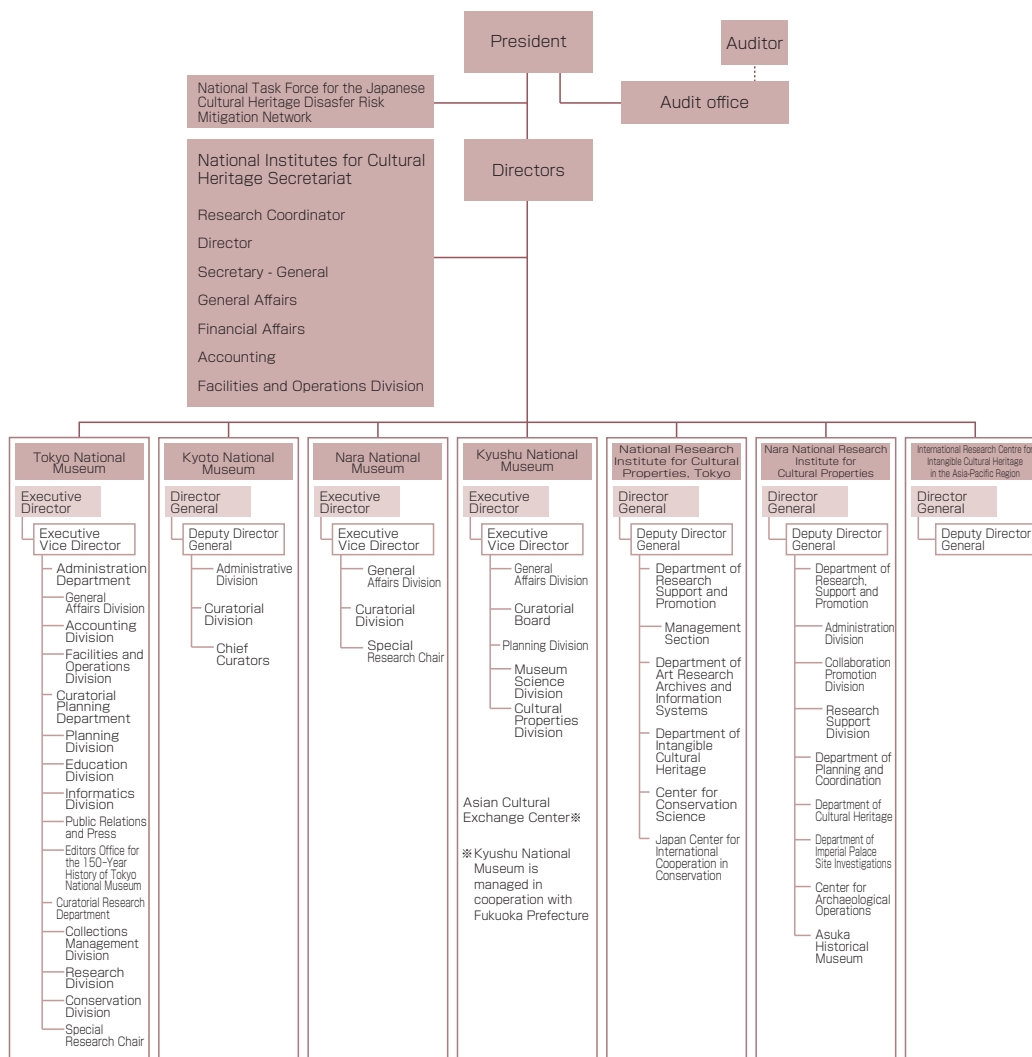
SAKAKIBARA Satoru: Director, Okazaki City Museum  
 SAKAMOTO Hiroko: Executive Director (Cultural Projects and Busi-  
 ness Development) of the Asahi Shimbun  
 Company  
 SATO Makoto: Professor, Graduate School of Humanities and Soci-  
 ology, University of Tokyo  
 TAMAMUSHI Satoko: Professor, College of Art and Design,  
 Musashino Art University  
 NAGOYA Akira: Vice Director, The Gotoh Museum  
 HAMADA Hiroaki: Professor, J. F. Oberlin University  
 FUJITA Haruhiko: Professor, Graduate School of Letters, Osaka  
 University  
 YANAGIBAYASHI Osamu: Reporter, The Yomiuri Shimbun Osaka

**Number of Staff**

Division	Number of staff	Administrative staff	Technical and security staff	Specialists	Curators/ Researchers
Total	330	131	19	2	178
National Institutes for Cultural Heritage Secretariat	22	22	0	0	0
Tokyo National Museum	94	33	11	2	48
Kyoto National Museum	36	18	4	0	14
Nara National Museum	33	15	4	0	14
Kyushu National Museum	27	10	0	0	17
National Research Institute for Cultural Properties, Tokyo	39	8	0	0	31
Nara National Research Institute for Cultural Properties	76	23	0	0	53
International Research Centre for Intangible Cultural Heritage in the Asia-Pacific Region	3	2	0	0	1

(Figures as of April 1, 2016)

## Organizational Chart



(As of April 1, 2016)

## Budget

### Fiscal 2016 Budget

#### Revenue

(Unit: JPY1,000)

Source	Fiscal 2016	Fiscal 2015
Self-generated Income	1,474,731	1,322,634
Government funding for operating expenses	8,387,941	8,440,731
Income from commissioned projects	576,849	26,000
Grant for facilities improvement	1,334,381	2,920,551
Others (Donations, etc.)	350,531	0
<b>Total</b>	<b>12,124,433</b>	<b>12,709,916</b>

#### Expenditure

(Unit: JPY1,000)

Purpose	Fiscal 2016	Fiscal 2015
Operational expenses	9,862,672	9,763,365
Personnel	3,472,102	3,249,769
Supply costs	6,390,570	6,513,596
Expenses for commissioned projects	576,849	26,000
Facility improvement	1,334,381	2,920,551
Others (Donations, etc.)	350,531	0
<b>Total</b>	<b>12,124,433</b>	<b>12,709,916</b>

## Income from External Sources

	Grants-in-Aid for Scientific Research (2016)				Funding for Commissioned Work (Fiscal 2015)		Research Grants (Fiscal 2015)	
	① Fiscal 2016		② Multi-year Fund Fiscal 2016		Number of projects	Amount (Unit: JPY1,000)	Number of projects	Amount (Unit: JPY1,000)
	Number of projects	Amount (Unit: JPY1,000)	Number of projects	Amount (Unit: JPY1,000)				
National Institutes for Cultural Heritage Secretariat	0	0	0 (0)	0	1	18,221	1	158,441
Tokyo National Museum	14	61,790	12 (5)	16,510	1	5,684	7	24,969
Kyoto National Museum	3	15,470	5 (1)	6,370	0	0	3	10,977
Nara National Museum	1	5,850	1 (0)	650	0	0	4	9,490
Kyushu National Museum	4	36,660	3 (0)	4,550	4	41,459	2	700
National Research Institute for Cultural Properties, Tokyo	10	29,965	16 (2)	17,940	22	254,270	2	900
Nara National Research Institute for Cultural Properties	19	96,170	42 (7)	57,330	32	223,008	6	4,350
International Research Centre for Intangible Cultural Heritage in the Asia-Pacific Region	0	0	0 (0)	0	1	51,455	1	5,000
<b>Total</b>	<b>51</b>	<b>245,905</b>	<b>79 (15)</b>	<b>103,350</b>	<b>61</b>	<b>594,097</b>	<b>26</b>	<b>214,827</b>

※The amount of ① is the appropriation amount as of April, 2016.

※In the case of projects that extend over multiple fiscal years, the amount given under ② shows the amount allocated to that year when the decision to provide the grant was first made.

※With regard to research topics for which both ① and ② were awarded (partial funding), the number of projects is included under the respective totals for ① and ②; the figure given in parentheses for ② is the number of projects for which both types of Grants-in-Aid were awarded. Please note that the figures given include indirect expenses.

※Funding for commissioned work excludes commissions from the National Institutes for Cultural Heritage.

## Information about Donation and Membership

### ○Financial Donations and Cultural Property Donations

#### [Financial Donations]

Independent Administrative Institutions are mainly administered through national grants for operational costs and facilities improvement. However, difficult financial conditions and the streamlining of operations makes it necessary to receive outside funds as well. The National Institutes for Cultural Heritage is no exception and we also need to secure other funding sources besides income from admission fees. For these reasons, we welcome financial support from a wide range of organizations and individuals.

The National Institutes for Cultural Heritage has been designated by the National Tax Agency as a Special Public-Interest Promotion Corporation. This means that donations to our institutions (by organizations or individuals) are eligible for more generous income and corporate tax deductions than donations to regular private entities.

#### ▶Income tax

When donating to a Special Public-Interest Promotion Corporation, individuals can deduct part of this donation from their taxable income. A FY2010 amendment to the tax law reduced the minimum annual tax-deductible donation amount from 5,000 yen to 2,000 yen, so any individual who donates more than 2,000 yen annually to Special Public-Interest Promotion Corporations will be eligible for a tax deduction. As a result, a donor will be able to deduct a donation amount of up to 40% of total income (minus 2,000 yen) when calculating income tax.

#### ▶Corporate tax

When donating to a Special Public-Interest Promotion Corporation, corporate entities can count the donation amount as a deductible expense separate from other general donations. Furthermore, the reform of the tax system in December 2011 raised the ceiling for the amount of donations that could be included as deductible expenses. As a result, the maximum amount of donations that can be counted as special deductible expenses = (amount of capital × 0.375 (formerly 0.25) + 6.25% of income (formerly 5%)) × 1/2

#### [Cultural Property Donations]

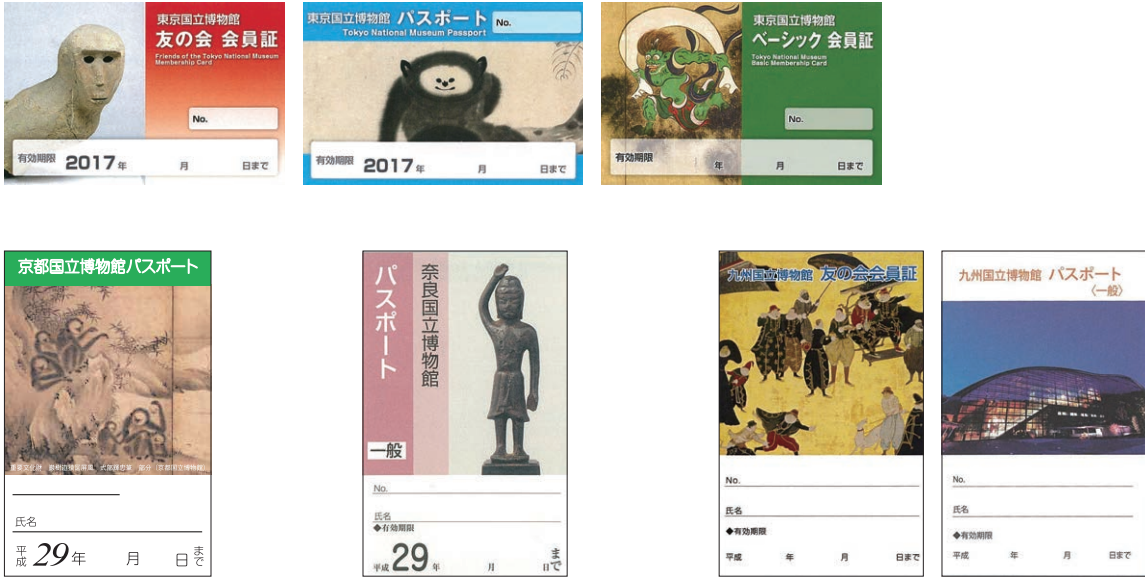
The National Institutes for Cultural Heritage is engaged in the preservation, management, research and display of cultural properties. In addition to purchasing these cultural properties systematically, we also accept donations from individuals or organizations.

For further information about donations, please contact the following departments:

Institution	Financial Donations	Cultural Property Donations	Phone Numbers
Tokyo National Museum	Accounting, Administration Department	Collections Management, Curatorial Research Department	03-3822-1111
Kyoto National Museum	Financial Affairs	Department of Registration and Image Archives	075-541-1151
Nara National Museum	Accounts	Department of Exhibition and Education	0742-22-7772 0742-22-7774
Kyushu National Museum	Financial Affairs, General Affairs Division	Collection Registration, Cultural Properties Division	092-918-2807
National Research Institute for Cultural Properties, Tokyo	Department of Research Support and Promotion, Planning Section		03-3823-2249
Nara National Research Institute for Cultural Properties	Department of Research Support and Promotion, Administration Division		0742-30-6732
International Research Centre for Intangible Cultural Heritage in the Asia-Pacific Region (IRCI)	General Affairs Section		072-275-8050
Inquiries not specifying institutions	National Institutes for Cultural Heritage Secretariat, Financial Affairs		03-3822-2439

### ○Membership

Tokyo National Museum and Nara National Museum are supported by the Supporting Member system, while Kyoto National Museum is supported by the Seifukai Association. We also offer "Friends of the Museum" and "Museum Passport" systems to encourage people to visit our museums more frequently. We welcome new members at any time of the year.



### Campus Members System

Each of the four National Museums has its own membership programs for universities and colleges. These programs are aimed at deepening cooperation with institutions of higher education and providing opportunities for their students to become familiar with the National Museums. Members can enjoy various privileges, including free admission to regular exhibitions, for a yearly membership fee corresponding to the number of students.

### ○Venue Rental

Each of the National Museums makes its facilities available as unique venues for MICE (Meetings, Incentives, Conferences and Exhibitions) events. From corporate parties to international conventions, the museum facilities can be used for a wide range of activities.



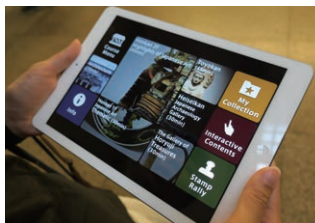
Overseas brand special exhibition at Tokyo National Museum



High-end jewelry event held at the Kyoto National Museum

### ○Improving Overseas Visitors' Experience

Each of the individual National Museums provides a convenient, pleasant environment for overseas visitors using multilingual explanations and guides.



English-language Museum guide application at Tokyo National Museum